

Memoirs from Eldred, New York, 1800–1950

Book 1

# The Mill on Halfway Brook

Stories of Families Who Settled Near Halfway Brook  
in the Town of Highland, New York  
1800–1880



*you must write  
now if she has  
son me father  
and you must be  
soon as you can I  
the children are all  
more I must*



*Maryot Eldred*

*from your affection  
Sister  
P. M. Austin*

Louise Elizabeth Smith



Memoirs from Eldred, New York, 1800-1950

Book 1

# The Mill on Halfway Brook

Stories of Families Who Settled Near  
Halfway Brook in the Town of Highland, New York

1800-1880

Louise Elizabeth Smith

HALFWAY BROOK



Photo: Gary Smith.

---

Published by Halfway Brook  
Cave Creek, Arizona

**Family information online:**

<http://halfwaybrook.com>: Halfway Brook community  
blog, on-going projects, resources

<http://weezy.info>: Stories and information about the  
Crabtree-Higginson, Austin-Leavenworth,  
Smith-Corbridge, and Fallin-Williams families

**Photo and text contributions:** Melva Austin Barney,  
Mary Briggs Austin, Cynthia Leavenworth  
Bellinger, Gary D. Smith, Daniel B. Smith,  
Joanna R. Smith

**Civil War Letters:** Linda Leavenworth Bohs

**Cover, interior design, and maps:** Gary D. Smith  
([www.PerformanceDesign.net](http://www.PerformanceDesign.net))

**Editing:** Gary D. Smith, Cynthia Leavenworth  
Bellinger, Joanna R. Smith

Copyright © 2010 by Louise E. Smith  
Printed in the United States of America  
ISBN: 978-0-9826374-0-1

All rights Reserved. Please contact the author for  
permission to reproduce any part of this book.

**Disclaimer:** Information and sources were recorded  
as accurately as possible. Incorrect information is  
unintentional. Please notify the author regarding  
errors so they can be corrected in the next edition.

I would like to thank Richard O. Eldred for  
permission to quote from his book, *The Eldred  
Family: Elisha Eldred of Minisink, New York, and His  
Descendants*, Baltimore: Gateway Press, Inc., 1988.

Other books by Louise Elizabeth Smith:  
*Grandma and Me*, and *Aida Austin's 1881 Diary*

---

# Table of Contents

**Acknowledgements.....iv**

**Dedication .....v**

**Map of Northeast United States .....vi**

**Map of the Town of Lumberland, 1798 .....viii**

**The Mill on Halfway Brook Introduction ..... ix**

**Ecclesiastes 3 ..... x**

**Chapter 1: The Town of Lumberland, 1798–1815 ..... 1**

**Chapter 2: The Mill on Halfway Brook, 1815–1825..... 13**

**Chapter 3: Life in Lumberland, 1825–1831 ..... 21**

**Chapter 4: Reverend Felix Kyte, 1832–1835..... 31**

**Chapter 5: The Mill on Blind Pond Brook, 1836–1849 ..... 39**

**Chapter 6: The Bubbling Spring, 1839–1850 ..... 49**

**Chapter 7: Near Hagan Pond Road, 1851–1860 ..... 67**

**Chapter 8: Letters from a Soldier, 1861–1865 ..... 87**

**Chapter 9: Your Loving Cousin, 1866–1871 ..... 133**

**Chapter 10: Emma Goes to College, 1872–1873..... 157**

**Chapter 11: Return to Eldred, 1874–1877 ..... 175**

**Chapter 12: “In Kansas Bright as Fair,” 1878 ..... 195**

**Chapter 13: “The Journey’s Length,” 1879–1880..... 205**

**Bibliography ..... 230**

**Appendix ..... 231**

**Index ..... 259**

**About the Author ..... 272**

---

### Chapter 3

# Life in Lumberland

## 1825 to 1831

*The work of most people in the area was related in some way to lumbering. Each lumbering company had its small community of employees, most of whom lived in make-shift tenements, and some did not have a garden. But all received wages which left no surplus at the end of the year.—John W. Johnston, Reminiscences.*



Delaware River View. Photo: Gary Smith.

The sound of sawmills ripping through huge logs to make planks could be heard throughout Lumberland.

Not all of the timber from the area went to local sawmills. A considerable amount of logs sent to the Delaware River by way of the nearest stream were made into rafts and floated to market.

Lumbermen and farmers lived in simple, small homes with no insulation. Barns usually stood across the road from the houses.

Lumbermen also farmed, and their oxen were used for both occupations. Vegetables, rye, corn, buckwheat, and some fruit trees were grown, as well as grain and hay for the stock. Meat and milk came from the cattle, which were free to roam. Chickens provided both meat and eggs.

Fish and eel were plentiful in the Delaware River. The Van Tuyl, Middaugh, Hooker, and other families kept a barrel of salted eels in the winter. Each child was given a boiled eel and four buckwheat pancakes for dinner. Other families in the area ate rye bread spread with butter or pork grease.

Many wild animals, including bears, roamed the forest in the

1820s. Years later, Jacob Stage's wife, Martha Carmichael, told a story about her grandmother as a young mother. The menfolk had gone some distance to hunt and left Grandmother alone with her children in a recently built house with only a curtain for a door.

When a bear appeared at the door wanting something to eat, Grandmother hid the children under the bed, and beat off the bear with anything she could grab. From then on, Martha's grandmother refused to stay alone when the men were away. Do you blame her?

Getting food and necessities for living was quite challenging in Lumberland's early days. Needed items were purchased from the Village of Newburgh, about sixty miles from Lumberland. The round trip on the Newburgh-Cochecton Turnpike took a week.

Farm produce, cattle, and wood products were transported from Newburgh west on the Turnpike. Items the settlers wanted to sell were sent to Newburgh, and from there transported by boat to New York City, another 67 or so miles away.

A bit later, but still early on, food and dry goods came





The Tri-States—New York, New Jersey, and Pennsylvania—meet at Port Jervis (originally Carpenter's Point), New York. Postcard in Mary Briggs Austin Collection.

from Carpenter's Point (Port Jervis), roughly 20 miles away. At Carpenter's Point, grain could be ground into flour. In the winter, when the Delaware River was frozen, goods were hauled from Carpenter's Point to Lumberland over the ice.

In 1825, a school was started for children who lived near The River settlement in the Town of Lumberland. Sears Gardner was the Town Supervisor, and James Eldred was the Town Clerk, Commissioner of Highways, and Town Marshall.

The community felt they needed a school. As was done in those times, a subscription paper was circulated to see if there was enough interest to start a school. John W. Johnston tells about the school in his *Reminiscences*.

Francis Quick circulated the subscription document on both sides of the Delaware River—from the Van Tuyl property near Handsome Eddy, northwest four miles to the Johnston family's home, near The River.

School would be held for three months of the year at a time, every week day, and on alternate Saturdays. People were to add their signatures and the number

of children they were responsible for if they were committed to supporting the school.

Nine parents signed up a total of 28 students. The Francis Quick family and the Van Tuyl family (Daniel and Rebecca), each had five children. The Calvin Crane family had four, as did Jane Johnston, the widowed mother of John W. Johnston. The Levi Middaugh family had three. So did James and Almira Hooker. Daniel Pool had two children.

The Nicholas Morris family and David Quick's family each had one. It was agreed that there was enough support for a school.

The school house was built southwest of Hugh Quick's home on a level piece of land surrounded by trees and a nearby spring of water.

With the help of their axes and oxen teams, the men and boys built a 16-foot square log schoolhouse in eight days. The walls were 7-feet high. Three walls each had a window. The fourth wall had a huge chimney and fireplace. The door had a wooden latch and string. There was even a place to hang hats and bonnets.

The teacher had a chair, and students sat on wooden slabs with legs made from saplings.

School opened on the first day of August, 1825. Miss Fannie Hooker, 51, was the teacher. Aunt Fannie, as she was called, taught for \$10 a month, and boarded at homes of the her students. She was the sister of James T. Hooker, husband of Almira Austin.

Miss Hooker was quite tall

## Eel Weir



Eel weir near Pond Eddy, New York. Photo: Cynthia Leavenworth Bellingier.

Eels are born in saltwater, but migrate to fresh water where they live before returning to the sea to spawn.

To the left is an eel weir/trap (two stone walls that form a "V") in the Delaware River near Pond Eddy. The eels run the Delaware River from the end of September though October.

*Eels are funneled into the V-shape and then drop down into a wire cage under the water (where you see the wooden contraption.) After being scooped up and put into burlap bags, the eels are cleaned and then smoked.—David Leavenworth, September 2009. 🐟*

## Lord & Taylor Department Store

Lord & Taylor, based in New York City, New York, is the oldest upscale, luxury department store chain in the United States.

Lord & Taylor began in New York in 1826 as a small dry goods store owned by cousins Samuel Lord and George Washington Taylor, immigrants to New York. They located their store near the North River waterfront in New York's Greenwich Village.

The store later moved to a place uptown on the Ladies' Mile, which catered to the wealthier clientele of the "carriage trade."

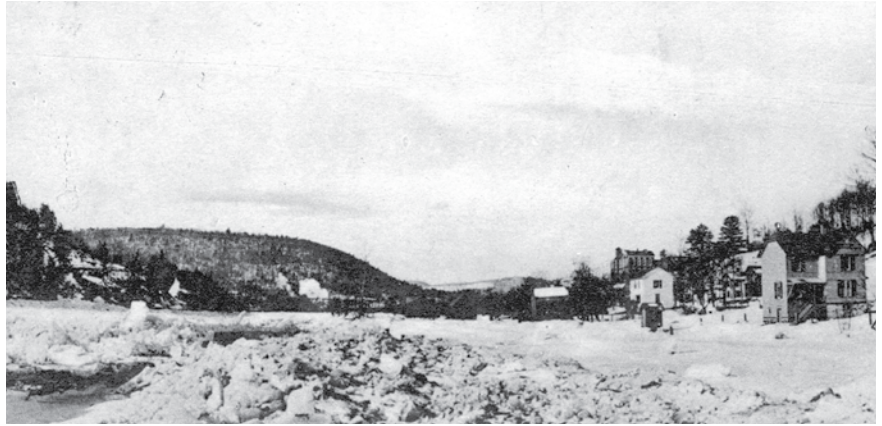
Lord & Taylor became a major fashion retailer, and the first major store on Fifth Avenue, New York City.

*Note: George Washington Taylor was the step-brother of Elizabeth Lazerlier Van Pelt, my great-great-great-grandmother. 🐾*

with large black eyes and a strong loud voice. She wrote poorly, but was a fluent reader and a good speller. She mainly used *Noah Webster's Spelling Book*, and the *New Testament* as a reader, as they were available to most of the students.

In winter, the fathers cut the trees and took the logs to the schoolhouse. The larger boys cut and prepared the wood for the fireplace, and the stronger girls helped to carry it in. The older girls scrubbed the school house on alternate Friday evenings when there was no school the following day. The younger children often stayed and played while the older girls worked.

The children walked to school in summer heat, spring rains,



*Ice gorge in the Delaware River at Hancock, N.Y., 50 miles northwest of Eldred, N.Y. Postcard is in the collection of Mary Briggs Austin.*

and wintry blasts, often with the same clothing. One little fellow, who traveled two miles to school, wore a muslin shirt with collar, coat, vest and pants, stockings and cowhide shoes, a hat, and a little mantle made of a single piece of cloth for his shoulders. His two sisters were similarly dressed.

The summer of 1826, Aunt Fannie left. Dick Manning taught that fall. Apparently Mr. Manning's teaching was not up to expectation. The school session was postponed until winter, when an older man, Mr. Furman taught for two weeks, then left for an offer he thought was better.

After a few years, the building was no longer used as a school,

as it was difficult to get to and too far away. In mild weather, however, the building was used for religious meetings where David Hickok preached and Levi Middaugh and Francis Quick exhorted and prayed. Eventually, the old schoolhouse rotted and fell down.

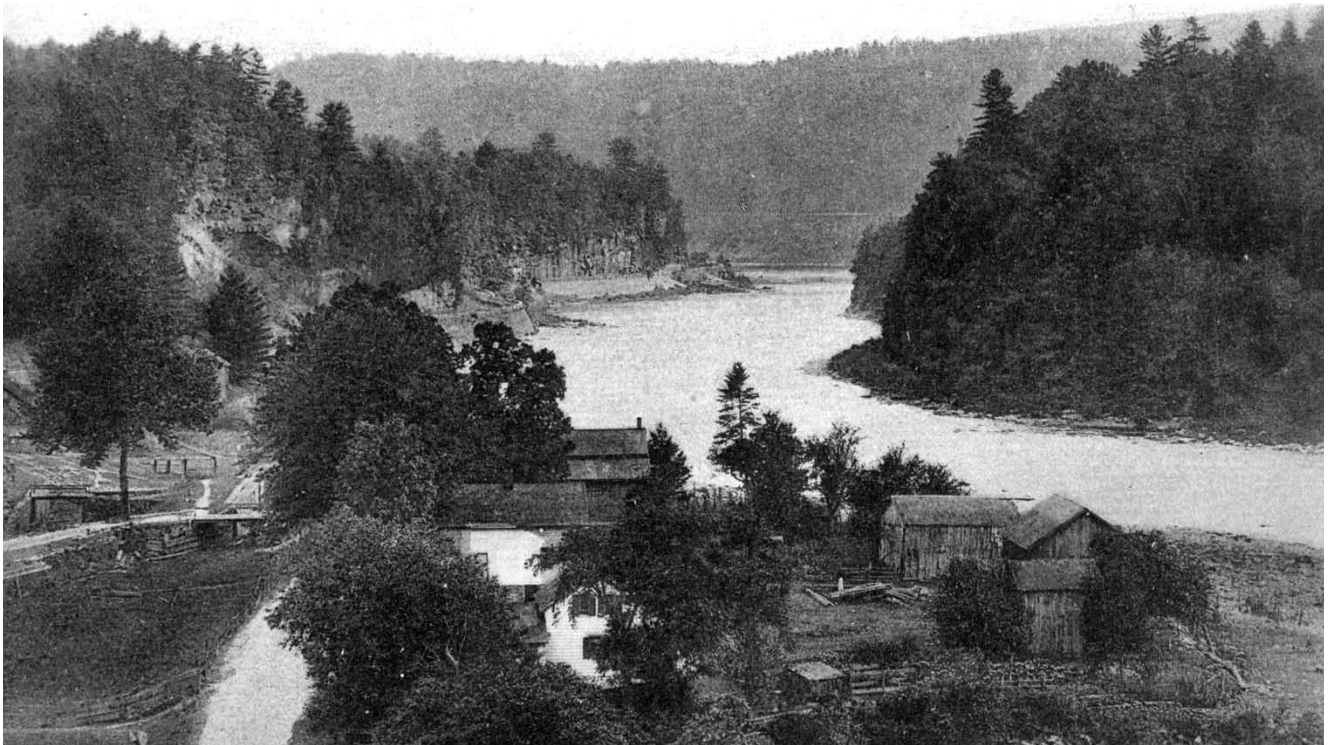
By 1826, the area where the Eldred family had settled was known as Halfway Brook Village, but was usually called *the Village*. Letters to the area were addressed to "Lumberland."

In February, a year after his wife Polly had died, James Eldred, 48, married Hannah Hickok, 37. Hannah, daughter of Asa and Hester Hinman Hickok, was my great-great-grandmother.



*Delaware River. Photo by Aida Austin in the collection of Mary Briggs Austin.*





The Delaware River at Barryville, New York. Postcard courtesy of Mary Briggs Austin.

Great-Great-Grandfather James Eldred probably met Hannah and her parents at the Congregational Church which had been held in his home.

Hannah was most likely well acquainted with the Eldred children: Sarah Carmichael, 21, and married with children; Abraham Mulford, 20; Charles Cotesworth, 18; Eliza, 15; and Maria, 10. (Grandmother in the Eldred-Austin cousin letters refers to Hannah Hickok Eldred.)

The Congregational Church of Narrow Falls now met in the schoolhouse in the Village.

Rev. Stephen Sergeant had left for a Presbyterian Church (and also seems to have sold his land). The Congregational Church had no pastor for six years. Deacons James Eldred and Alexander Carmichael helped direct the congregation during this difficult time. James Eldred described the church situation in this letter:

*About twenty of its members have been excommunicated. Sixteen of which were for intemperance.*

*Our Pastor Rev'd Stephen Sergeant has approached the church and told us we were not established under the government of God's Word, and has gone to the Presbyterians.*

*Some who we looked to as Fathers in Israel and Mothers, also, have had no regard to their obligations and teach others to regard it not, (and united themselves to the Methodist people).*

*Others have sickened and gone as we hope from the evils to come, others have moved out of the country, others have taken letters of dismission and joined to other churches in Christian order.—James Eldred letter.*

In September 1827, James Eldred's daughter, Eliza Eldred, almost 17, married James Keen



Eliza Eldred, daughter of James Eldred and wife of James K. Gardner. Melva Austin Barney Collection.





*Child leading mules near Rosendale, New York, on the Hudson part of the Delaware and Hudson Canal. The mules are eating from woven baskets.*



*The barge has just left Lock No. 9, north of New Paltz, New York, on the Delaware and Hudson Canal.*



*After leaving Lock No. 8, the barge loaded with firewood continues northeast towards Rosendale, New York. The man on the left is steering the barge. The mules towing the barge are in the distance on the towpath. The above photos taken by William or John Crabtree in the late 1800s are courtesy of The Century House Historical Society.*

## D&H Canal

The Delaware and Hudson Canal opened in October 1828. It had taken 2,500 men and 200 teams of horses three years to dig and blast through 108 miles of wilderness to connect the Delaware and the Hudson River.

The canal began at Rondout Creek near Kingston and went through several areas, including the Neversink River Valley on its way to Port Jervis on the Delaware River.

The canal then ran northwest on the New York side of the Delaware River, crossing into Pennsylvania at Lackawaxen and on to Honesdale.

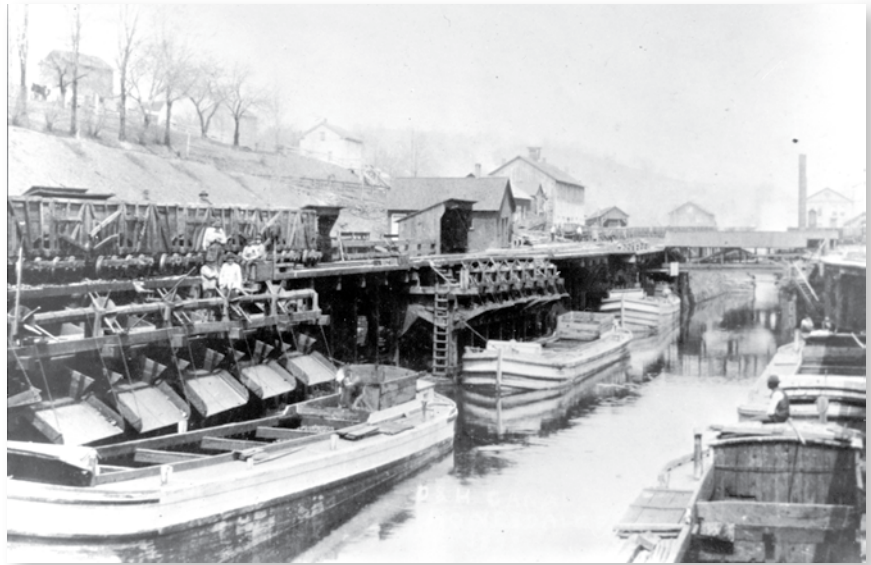
The canal was divided into three sections for operational purposes:

the Lackawaxen: from Honesdale to the Delaware; the Delaware: along the river from there to Port Jervis; and the Neversink: from Port Jervis to Kingston.

To get the anthracite from the Wurts brothers' mine in the Moosic Mountains near Carbondale to the canal at Honesdale, the canal company built a gravity railroad. The state of Pennsylvania authorized its construction on April 8, 1826.

On August 8, 1829, the D&H's first locomotive, the Stourbridge Lion, made history as the first locomotive to run on rails in the United States.

—[www.en.wikipedia.org](http://www.en.wikipedia.org). 🐾



*Railroad cars transfer their loads of anthracite (hard) coal to D&H Canal boats in Honesdale, Pennsylvania. Source: Delaware and Hudson Railroad and Canal, by Wayne County Historical Society. Reproduction number HAER PA,64-HOND,3-1.*

Gardner, 22, son of Sears and Mary K. Gardner. The year before, James K. Gardner had started manufacturing wheelbarrows.

In 1827, James Eldred was Inspector of Schools and Town Clerk (until 1832) for Lumberland.

In December of 1827, my great-grandmother, Mary Ann

Eldred, the future wife of William Henry Austin, was born to James and Hannah Hickok Eldred in Halfway Brook Village, Town of Lumberland, Sullivan County, New York.

The Town of Lumberland, especially The River settlement on the Delaware River, was a very busy place from 1826 to 1828.

The Delaware and Hudson Canal, which would play a vital part in the growth of the communities along or near the Delaware River, was being built, and new job opportunities were opening up. The area would no longer be supported solely by the lumber industry. Places for lodging and food would be needed for the workers and the

travelers on the canal.

The 108-mile long Delaware and Hudson Canal went from Honesdale, Pennsylvania, near the Delaware River, to Kingston, New York, near the Hudson River.

The first canal boats loaded with coal arrived at the Hudson River in November 1828. From then until 1899, barges carried anthracite coal from the Moosic Mountains of Northeastern Pennsylvania mines to the coal markets of New York City, by way of the Delaware and Hudson Rivers.

Mr. Johnston recalled watching the first canal boat:

*On a pleasant October evening of 1828, when a child of about five years of age, I stood beside the towpath held by my mother's hand, and looked upon the first boat that passed up the canal on its journey to Honesdale for a load of coal.*

*After the lapse of more than seventy years, I can picture to my fancy the marks and features of the horse that towed the pioneer boat—a light sorrel of medium size, compact in form, having a narrow white strip in the face and white forward feet.*  
—Johnston, pp. 125–6.



Barryville, the old Gristmill. Postcard is in the collection of Mary Briggs Austin.

In the Town of Lumberland, the canal went some 17 miles—from the Mongaup River to a point close to the junction of the Delaware and Lackawaxen Rivers. Originally there were eleven locks, but it was increased to fourteen.

*By means of aqueducts it crossed four principal streams—the Mongaup, the Pond Eddy Brook, the Halfway Brook, and the Beaver Brook... To each and every lock, a dwelling house was erected for the use of the lock-tender, and located beside the towpath and central part of the*

*lock, if the ground permitted.*  
—Johnston, p. 19.

The person (often a boy aged 12 to 16) who led the mules pulling barges along the towpath, was paid three dollars a month. This included walking 15-20 miles a day, pumping out the barges, and tending the animals.

At first, it took a week to go the entire length of the canal. The canal was closed on Sunday, and in the winter when the water froze up or was likely to.

A number of new towns sprang up. The Town (township) of Cocheton was formed from the Town (township) of Bethel on March 25, 1828. Cocheton (the Town) included the villages of Cocheton, Cocheton Center, and Tylertown.

Carpenter's Point, renamed Port Jervis in 1827, became a main port on the D&H Canal. John B. Jervis, for whom Port Jervis was named, was a Delaware and Hudson Canal engineer.

A blacksmith shop, a gristmill, and a broom handle factory were established at The River settlement shortly after 1828.



Pond behind the Barryville Gristmill. Postcard is in the collection of Mary Briggs Austin.



Later a glass factory opened which made molded glass.

Mr. Johnston tells about the store that Mr. Forgerson kept at what would soon be called Barryville:

*Forgerson kept the only store in the region, cleared land, ground a little feed, and sawed a little lumber for customers. In 1830, he built a dwelling house still continuing his mercantile business in the old store.*

Gardner Forgerson had been an agent in George D. Wickham's Ten Mile River lumbering operation. In 1828, Forgerson bought Wickham's property at The River settlement (Barryville), and built a home for his family there two years later.

James K. Gardner and his wife Eliza would have a son Stephen St. John Gardner, who would live on Forgerson's property and whose house would have part of Mr. Forgerson's original structure.

Lumberland still bustled with activity after the D&H Canal was completed. The River settlement at the mouth of Halfway Brook resonated with the sounds of a thriving community at work. You might call the cacophony—*The Work Symphony*.

Axes chopped, saws buzzed, trees fell, saw blades whirred, logs floated in rafts down the river, and canal workers walked along the river path shouting to the mules pulling the canal boats as people passed by.

Cart wheels thudded along the rough paths, horse hooves clopped, and merchants sold their wares in a sing-song voice.

Oxen plowed gardens with an occasional shout from the farmer as various barnyard animals clucked, neighed, or oinked.



*Glass Factory Pond. Postcard is in the collection of Mary Briggs Austin.*

## Sherman B. Leavenworth

*I always heard from Dad (Clinton Leavenworth) that Sherman B. came from Connecticut into Eldred through Monticello with the Hurd family in covered wagons. They came with the Hardenburgh Lumber Company from Connecticut.*  
—Linda Leavenworth Bohs.

From several sources I have pieced together a possible scenario from several sources of the early years of my great-great-grandfather, Sherman Buckley Leavenworth.

About 1828, Sherman B., age 20, moved from Connecticut to Sullivan County in New York, with the Hurd family in a covered wagon. The men worked for a Connecticut Lumber Company that would be lumbering in the New York area.

There are records of a Hurd family marrying into the Leavenworth family, so perhaps the Leavenworths moved with the Hurd family who were relatives.

Elias Leavenworth (not a direct relative) wrote, *A Genealogy of the Leavenworth Family in the United States*. Towards the end of the book, a Sherman Leavenworth is mentioned as living near Monticello.

Ten miles west of Monticello is the town of Bethel, New York,

where several Hurd families had settled by 1810. The town, *Hurd Settlement*, four miles north of Bethel, is on modern maps.

Is it possible that Sherman Leavenworth, mentioned in the *Leavenworth Book*, lived near Bethel or the Hurd Settlement, and "Monticello" was referring to Monticello and the nearby area?

In the 1830 census of Bethel, a Truman S. Leavenworth was listed as living in Bethel, 12 miles north of what was then Halfway Brook Village. Truman's household consisted of one female and two males, all between the ages of 20 and 30.

Our Sherman B. would be 22 in 1830. Could Truman be his brother, and Sherman lived with him?

By 1840, Sherman Buckley Leavenworth was in Halfway Brook Village as he was listed in the 1840 census of Lumberland. 🌲

Not all the sounds were raucous or loud. Children laughed as they played hide and seek. Women baked, gardened, sewed, made bread, knitted, washed clothes, sang lullabies to their

babies, and made huge meals to feed hardworking husbands and growing children, who were hopefully helping out by getting water from the well or firewood for cooking and keeping warm.

There were conflicts on the waterways. Timber from the area being rafted down the Delaware River to Philadelphia for the ship building industry interfered at times with the progress of the canal boats. Soon aqueducts would alleviate the problem.

The D&H Canal would play an important part in shipping the bluestone that was accidentally discovered some twelve miles north of Port Jervis, around 1835, by "Uncle Steve" Griffin, who was rattlesnake hunting. That was the story told in the March 1889 issue of the *New York Times*.

Though plentiful in the area, it would be another 30 years before the bluestone on either side of the Delaware River became curbs and sidewalks for New York City.

About 1828, Sears and Mary K. Gardner left Pond Eddy and moved to the east side of Halfway Brook Village, to property they owned north of Village Road near Halfway Brook. Sears Gardner may have owned the property with Abraham Mulford Eldred at first. It would later be owned by C.C.P. Eldred.

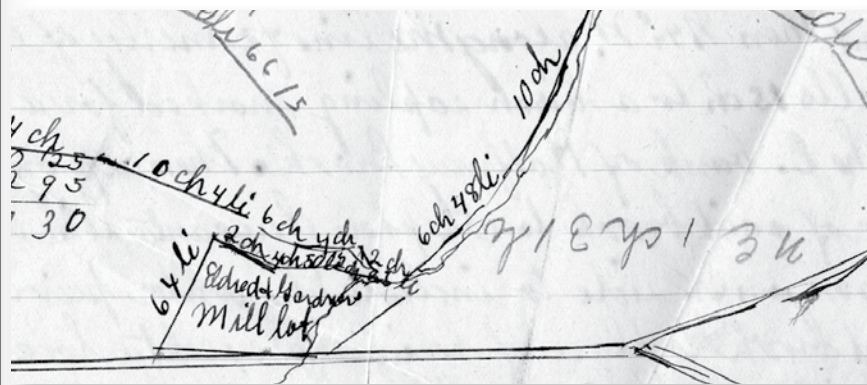
Sears and Mary K. Gardner's daughter, Letitia (Letty) Gardner, married Ethel B. Sergeant, son of Stephen and Anna Sergeant, in October of 1828.

In the late 1820s, there was still not a good way to travel on land. Whether you walked or rode a horse, the roads were rough and through the wilderness.

Whether by foot, horseback, canal or all three, Doctor Perkins left Poughkeepsie, New York, in 1829, and managed to arrive in Lumberland, where he would be the only physician for over 300 square miles.

Fortunately, the people were usually healthy, according to Mr. Johnston in his *Reminiscences*,

## Eldred-Gardner Sawmill



Map on copy of June 1828 land deed from John Wells to Sears Gardner. Melva Austin Barney Collection.

The above map on a copy of the June 1828 land deed from John Wells to Sears Gardner, shows an Eldred-Gardner Mill lot where Sears and Mary K. Gardner lived at one time. Abraham Mulford Eldred may have been co-owner at first.

The property was near Halfway Brook, north of what is now Proctor Road, just before the "Y" in the road to Highland Lake, and was later owned by C.C.P. Eldred. In 1851, the Post Office was in the home of C.C.P., which was on this property.

*Commencing on west line of lot 21 in 7th div. of Minisink Patent, S. 47 degrees E., 4 chains to sandstones E. side of main road leading up the Halfway Brook. Containing 49 acres. —excerpt from John Wells deed to Sears Gardner, 1829.*

### Rod, chain, links, and furlongs

A rod equals 16.5 feet or 25 links. One chain equals 4 rods.

The rod, a measurement of medieval times, was still used in the mid-1800s.

An acre in medieval times was one chain or four rods (ox goads) long, by one furlong (in the UK, ten chains).

A furlong was "one plough's furrow long" or the length of a furrow that could be plowed by a plough team without resting.

The length of the furlong and the acre vary regionally, due to different soil types. In England the acre was 4,840 square yards, but in Scotland it was 6,150 square yards, and in Ireland, 7,840 square yards. 🐾

where he describes the good Doctor Perkins.

Doc Perkins used five or six prescriptions to treat disease. He did not like the home remedies or superstitious notions that prevailed at the time.

Doc Perkins first boarded at Robert Land's house at Beaver Brook, four miles back from the river and canal. The fun loving, agreeable doctor always wore a suit of heavy winter clothes, and traveled on horseback without a

padded saddle or coated stirrups.

Mr. Johnston described the travels of Doctor Perkins:

*Thus for 24 years, he traveled many thousands of miles over the rough highways, the narrow timber roads, the cow paths; over hills and through valleys, through dark, dense wildernesses and groves of lofty timber, during night and day, amid sunshine and storm, cold and heat.*



## Where They Lived in 1830

### Town of Lumberland

According to the 1830 Census, there were 926 people in the Town of Lumberland. This included 427 children under age 14, six people in their 70s, three in their 80s, but no one in their 90s.

Sears and Mary K. Gardner had five in their home, ages 9 to 29. Their daughter Mary Gardner married Benjamin C. Austin, (from the other Austin family in town), in 1830, sometime after the census was taken.

Uncle Justus and Polly Hickok had three children under 10.

James T. and Almira Austin Hooker had six children under 19, one person under 20, one under 50, and one under 80 years old.

Laurence Ingraham had three under 15, and possibly his mother or mother-in-law, age 60 or over.

The Daniel Van Tuyl and Daniel Owens families were also listed.

Alexander Carmichael and his wife had four children under 15.

Elnathan Corey had a full house of nine. Robert Land and his wife had five children under 15.

Gardner Forgerson and his wife had four children under 10, and six others from 16 to 39. In the next chapter, Gardner Forgerson helps out the new Congregational Church pastor, Felix Kyte.

The LaBarr family still lived in Beaver Brook and included Gordon Ransom LaBarr who was around 10.

Jacob Stage was not yet 30.

Stephen and Anna Sergeant had three sons at home—Stephen, 20, Thomas L., 17, and Isaac C., 15.

Their son Ethel Sergeant and his wife Letty Gardner lived next door with their 1-year-old. Ethel and Letty's son Alvah Sergeant was born

in Beaver Brook, in June 1831. Alvah Sergeant would have a son who would marry a daughter of Harriet Covert born in September 1831, to William and Anna Covert in South Lebanon.

Harriet Covert would marry George Clark, son of Wilmot and Mary Van Auken Clark. George Clark's brother Mahlon Irvin Clark, 3, would marry Laura Austin.

John Bishop and his wife Julia had a son under 5. John's father Stephen and possibly some brothers lived in Lumberland. John plays an unexpected part in our story.

Thomas W. Clark, husband of Phebe Hazen, and father of George Case Clark, died in Mongaup, in 1829. Phebe married Moses Myers. They would be the parents of Abel Sprague Myers, a grandfather or great-grandfather to some of the people we will meet in this book.

Other families included Solomon Hurd, Robert Many, Daniel, Samuel and William Wells, and John Wheeler.

### Not in Lumberland Leavenworth Family

Truman S. Leavenworth and three Hurd families were listed in the 1830 Census of Bethel, New York.

Three people were listed as living with Truman Leavenworth—one female and two males between the

ages of 20 and 30. Was Sherman B. Leavenworth, 22, one of the men listed in Truman's household?

A Gideon Leavenworth lived in Middlebury, New Haven, Connecticut.

### Austin Family

The Austin family lived in Somers, Westchester County, New York. Ralph (Rolf in this census), 46, and Fanny Knapp Austin, 42, William Henry, 6, Ann Mary, 3, James H., 9, Caroline, 13, Emma Eliza, 15 (Emma died in October), Augustus A., 20, and Samuel Knapp, 22. The census shows another young man in his twenties.

Ralph and Almira's father, Joshua Austin had died July 1828.

### Hickok Family

Asa and Esther Hickok, and son David H. and his wife and family were in Warren Township, Bradford County, Pennsylvania, in the 1830 Census.

### Myers Family

Martin David Myers, 15, lived in New Jersey with his parents David and Elizabeth Myer, and seven siblings.

### Van Pelt Family

Elizabeth Lazerlier Van Pelt, and children, Peter, 20, Maria, 17, and Jane Ann, 15, lived in New York City. Elizabeth's mother, Mary Webber Lazerlier Taylor, was 66. 🐾



Delaware River near Barryville. Photo: Mary Briggs Austin.

Doc Perkins charged 25 cents for a visit to the village or the area nearby, with the option to pay or not. A visit to Ten Mile River from Barryville (11 miles through the

woods), was 75 cents. One family of five children and a mother, he contracted for \$5 a year. Some families never paid the doctor, though he had called on them

for 18 years.—*Johnston, pp. 340, 342–3.*

You may remember that in the early 1800s, Solon Cooper and Levi Middaugh ran the first

store in Pond Eddy. Mr. Cooper mysteriously disappeared in 1830. Thus ended the Middaugh and Cooper store.

The Congregational Church was still struggling without a preacher in 1830 when circuit riding preachers from the Methodist Episcopal Church, began teaching in villages on both sides of the Delaware River in the tri-state area of New York, Pennsylvania, and New Jersey.

Mr. Grace and Mr. Street preached every two weeks in the Town of Lumberland. Visits were made during the day, and services were held at night.

It is quite possible that Sherman Buckley Leavenworth, my great-great-grandfather, lived in the town of Bethel some 11-1/2 miles away from Halfway Brook, by 1830. By 1835 (see *Chapter Five*), Sherman B. and his wife Charlotte Ingram, from Scotchtown, New York, lived in Halfway Brook Village.

James Eldred and his family lived south of Village/Proctor Road. One source said that James

built a store around 1830. By 1830, James had built the Eldred Homestead which replaced the original log cabin.

*The Eldred Homestead, (no longer in existence), was built by James Eldred and operated by him. It was used as a tavern at one time, and known as Temperance Tavern.*

*It was still there when I lived in Eldred—a few hundred feet back from what is now the main road, and as far as I know was the first permanent building in Eldred. (An old sign was found in the attic referring to such.)*  
—Melva Austin Barney.

There were many temperance groups in New York in the 1830s, so it would not be a surprise to have an inn in town that did not serve alcoholic beverages.

One room of the Eldred Homestead/tavern was used for the Lumberland Post Office when James became Postmaster on October 5, 1831.

By 1831, The River settlement

had its own Post Office named after William T. Barry, the Post Master General. The town was then called Barryville, although it continued to be referred to as The River.

In 1832, the good doctor Perkins married Comelia Dabron, and they moved into the old Hickok farmhouse, two miles from Barryville.

By 1832, James Eldred and Hannah Hickok had been married six years, and their daughter, Mary Ann Eldred, was 5 years old.

Zophar and Sarah Eldred Carmichael, 27, had at least three children. The youngest was Lewis Carmichael born in 1831. The family eventually lived in Wallkill on the Carmichael family farm.

Abraham Mulford Eldred, 26, had purchased several large tracts of land, and was lumbering and farming. Uncle Mulford, as he was called, was also active in government. He had been elected constable of Lumberland in 1830, and was also the collector of taxes, and inspector of schools in 1830, 1832, 1834. He was single until about 1838.

In 1832, Charles (C.C.P.) Eldred, 24, a farmer and lumber dealer, was not yet married.

Eliza Eldred Gardner was 22, and had been married five years to James Keen Gardner. Eliza and James K. had Charles, 2, and baby Chauncey, who died in August. The family would soon move to Beaver Brook where James K. would be a supervisor for a lumbering company.

In two years Phebe Maria Eldred, 16, would marry Augustus Alonzo Austin, whose whereabouts in 1832 are unknown. Perhaps only Phebe Maria, 16, and Mary Ann, 4, lived at home with James and Hannah Eldred in 1832. 🐾



Delaware River at Barryville, fall 2008. Photo: Mary Briggs Austin.



## Index

- 54th Regiment, New York, 110  
 56th Regiment, New York, 94  
 1832, May Flood, 34  
 1845 Land Mortgage Sale, 56  
 1845 and 1848 Letters, 59  
 1857, Winter, 77  
 1873 Depression, 174  
 1875 N.Y. Farm Census, 183
- A  
*A Reverie/Kansas Romance*, 225  
 Albany Normal School, 157, 161  
 Alden, Dr., 157, 161, 165, 168, 172, 173  
*An Answer*, 223  
 Antietam, 96  
 Asendorf, Henry, 148, 228  
 Aunt  
   Bertha, 237  
   Chat, 237  
   Sal, 109  
 Austin  
   Abigail Holcomb, 51  
   Adelaide/Addie, *see Thompson*  
   Aida/Ida, 13, 14, 20, 49, 55, 80, 83, 86, 90, 106, 107, 113, 134, 135, 143, 146, 149, 151, 157, 172, 174–180, 185, 186, 188, 189, 193, 195, 196, 199, 200, 201, 205, 210, 211, 213, 216, 217, 218, 220, 222, 224, 226, 234, 236, 238, 239, 273, 253  
   Albert Alonzo (Lon), 76, 84, 90, 134, 135, 146, 157, 172, 174, 175–180, 185–197, 199, 201–203, 205, 208, 209, 210–214, 218, 225, 229, 234, 251  
   Almira, *see Hooker*  
   Alonzo, Eugene, Sr. (Rev.), 46, 47, 50, 55, 57, 67, 84, 90, 130, 134, 135, 140, 162, 163, 189, 226, 234  
   Alonzo, Eugene Jr. (Dr.), 37, 67, 140, 162, 226  
   Ancestors, 51  
   Ann Mary, *see Schoonover*  
   Anthony Jr., 51  
   Anthony Sr., 51, 240  
   Antoinette/Net, *see Clinton*  
   Arthur 70, 142, 186, 215, 240  
   Augustus Alonzo, 11, 13, 14, 19, 29, 30, 37, 46, 47, 49, 50, 53, 55, 57, 62, 65, 67, 70, 76–78, 80, 81, 84, 90, 103, 112, 113, 133, 134, 135, 137, 162, 164, 174, 175, 180, 191, 197, 226, 234  
   Benjamin C., 29, 62, 68, 111, 226, 234  
   Caleb, 4, 51, 52  
   Caroline, *see Newman*  
   Charles Augustus (Gussie), 162, 163, 171, 197  
   Charles Mortimer, 4, 14, 45, 50, 104, 127, 130, 134–136, 146, 157, 175, 176, 185, 188, 194, 195, 226, 227, 229, 232, 234  
   Charles Raymond, 78, 104, 159  
   Christina, 67, 90, 134, 135, 162, 234  
   Clara, *see Teed*  
   Clementina, 70, 90, 134, 135, 162, 234  
   Dawn Lee, *see Sagarra*  
   Deborah, 51  
   Edith Emogene, 66, 67, 69, 76, 84, 90, 113, 122, 125, 126, 129, 133–138, 140–143, 146, 148–153, 155–158, 161–168, 170–182, 185–196, 198, 201, 203–214, 216–219, 221, 222, 234  
   Edward Augustus, 127, 130, 151, 174, 234  
   Edward D., 67, 90, 134, 135, 162, 234  
   Elijah, 51, 52  
   Elizabeth, 51  
   Emily Parmenter, 234  
   Emma Eliza, 11, 19, 29, 234  
   Esther Huggins, 51  
   Evaline, 135, 162, 234  
   Fanny Knapp, 4, 5, 11, 13, 14, 19, 29, 37, 38, 46, 49, 50, 53, 54, 61, 67, 69, 73, 75, 76, 80, 81, 84, 90, 106, 112, 120, 121, 135, 137, 149, 197, 234, 243, 244–247, 249  
   Frank, 186  
   Gladys Myers, 37, 47, 72, 78, 80, 83, 104, 147, 159, 173  
   Grace Emma, 70, 90, 134, 135, 162, 174, 234  
   Gustavus, 52  
   Harriet (d/o Benjamin C.), 62  
   Henrietta, 130, 134, 140, 162, 226  
   Henry Ladore, 135, 137, 146, 154, 157, 166, 176, 185, 190–193, 195, 203, 206, 207, 209, 212–214, 219, 226, 234  
   Ida Belle (Belle), *see Brown*  
   Ira M., 62, 131, 186, 226  
   Isabelle (Belle) Camp, 84, 90, 130, 134, 135, 140, 162, 163, 226, 234  
   James Eldred, 70, 76, 84, 90, 134, 135, 146, 157, 175, 176, 185, 187, 194, 195, 196, 205, 218, 222, 229, 234, 247  
   James H., 19, 29, 38, 50, 54, 65, 70, 76, 78, 81, 113, 137, 139, 140, 234  
   Jennie Louisa Leavenworth, iv, ix, 14, 39, 44, 45, 70, 104, 220, 228, 233, 234  
   Joan, *see Geier*  
   John Mortimer, 197  
   Joshua Jr., 4, 5, 11, 29, 51, 52, 106, 234  
   Joshua Sr., 4, 51, 52  
   Joshua M., 65, 234  
   Julia, 113, 138, 139, 154, 165, 234  
   Justina (Tina), *see Laing*  
   Laura, *see Clark*  
   Margie, *see Maglione*

- Maria Adelaide, 67, 69, 76, 84, 90, 134, 135, 146, 157, 173, 176, 179, 185, 189, 190, 192–195, 201, 203, 206, 209, 211–214, 219, 220, 222, 226, 234
- Martin Van Buren, 62
- Mary (wife of Joshua Jr.), 4, 5, 106, 234
- Mary Henrietta, 62, 66, 67, 69, 76, 84, 90, 125, 134, 135, 146, 157, 176, 185, 195, 203, 209, 213, 226, 234
- Mary A. (d/o Benjamin C.), 62
- Mary Ann Eldred, 14, 25, 30, 33, 35, 38, 45, 46, 51, 54, 55, 57, 58, 59, 60, 61, 62, 64, 65–67, 69, 75, 76, 80, 81, 84, 90, 112, 113, 122, 126, 127, 130, 133–135, 137, 139, 140–142, 146, 148, 150–153, 155–157, 165, 166, 171, 173–175, 185, 189, 190, 194, 195, 200, 203, 205, 216–219, 221–226, 234, 241, 248, 258
- Mary Briggs, iv, v, 54, 90, 137, 148, 215, 248
- Mary Gardner, 17, 29, 62, 63, 111, 234
- Mary Letitia Millspaugh, 135, 143, 162, 163, 171, 197, 234
- Melva, *see Barney*
- Minerva, 186, 226
- Minnie, 186
- Miranda (Rand), *see Paton*
- Mortimer (Mortie), 130, 133, 134
- Mortimer Bruce, 46, 47, 57, 65, 67, 74, 90, 102, 103, 104, 112, 113, 134, 135, 143, 147, 162, 163, 171, 234
- Nancy, 60
- Nellie, 186
- of Schickshinny, 52
- Olinda Ann, 90, 130, 134, 140, 162, 163, 226
- Phebe Maria Eldred, 13–15, 20, 24, 30, 37, 46, 47, 50, 57, 60, 65, 67, 70, 75, 80, 84, 90, 103, 112, 133–136, 162, 174, 191, 224, 226, 234, 242
- Ralph, 4, 5, 11, 13, 14, 18, 19, 29, 37, 38, 46, 49, 50, 52–54, 61, 67, 70, 73, 80, 81, 84, 90, 91, 102–104, 106, 120, 135, 137, 175, 197, 234
- Randolph Laing, 141, 151, 234
- Robert, 4, 50, 54, 130, 137, 138
- Richard, 51
- Richard (Asten) Sr., 51
- Ruth, 51
- Samuel Knapp, 5, 11, 19, 29, 38, 50, 103, 104, 112, 113, 234
- Sarah, 62
- Sarah Tone, 62
- Shadrack, 51, 52
- Susan Teed, 38, 50, 104, 112, 113, 234
- Tryphena, 51
- Tryphena Hathaway, 51, 52
- Uncle Ralph, 51, 52
- William Henry, 14, 19, 25, 29, 37, 38, 45, 46, 50, 54, 55, 61, 62, 65–67, 69, 70, 73–77, 80, 81, 84, 90, 113, 126, 127, 130, 133, 134, 135–137, 140–142, 146, 148–151, 154, 156–158, 162, 165, 170, 171, 172, 174–178, 180, 183, 185, 187, 189, 194, 195, 205, 208, 211, 217, 226, 234, 250, 251
- Ayres  
David, 68  
W., 166
- B**
- Badger, John, 85
- Barker, Jesse and Lucy, 74
- Barnes  
Almira, *see Eldred*  
Cornelius, 14  
Elizabeth, 12  
Elizabeth, *see Owen*  
Family, 9  
Henry, 12  
Jeremiah, 12, 14  
John, 12  
John and Elizabeth Holbert, 79  
Nathan, 12  
Rebecca, 12  
Thomas, 12
- Barney, Melva Austin, ix, 4, 30, 47, 55, 62, 73, 76, 78, 79, 90, 103, 127, 134, 139, 151, 152, 157, 158, 161, 173, 175, 194, 217, 218, 222, 236
- Barry, William T., 30
- Barton  
Benjamin, 11  
John, 20
- Beakey, Ellen, 90
- Beaks, Stacy, 45
- Beasley, Len, 177
- Beaver Brook, 26, 214
- Beecher, Henry Ward, 182, 189, 196, 207
- Bevis*, 51
- Bishop  
Anna, 40  
Family, 40, 42  
Ichabod, 40, 68  
John, 29, 40, 42, 53, 68, 86, 120  
Julia, 29, 40  
Oliver, 40, 42, 45, 68, 86, 120  
Sarah Ingram, 40, 53, 68, 86, 120, 147  
Stephen, 40, 42, 45, 68, 86, 147  
Stephen, 29
- Black Friday Panic, 142, 154, 174
- Blind Pond, 39, 40, 42, 44, 83
- Blind Pond Brook, 39, 42, 43, 44, 45, 47, 49, 65, 112
- Bluestone, 26, 144, 154, 214, 229
- Bogert  
Amanda Hogencamp, 147  
Carrie Etta, *see Clark*  
John, 147
- Bolton  
Ann Eliza Hickok, 54, 59  
Lewis, 59
- Bowhanan, Sarah Eldred, 5
- Boyd  
Alexander, 66, 69, 82, 120, 147, 186  
Bertha, 228  
Comfort, 69, 82, 92, 95, 120, 125, 131, 147, 186  
Duncan, 68  
Elizabeth, 69, 82, 120, 147, 186  
Floyd, 148  
Isabel, 148, 228  
James, 69, 82, 147, 148, 180, 183, 186, 228



- James Edward, 228  
 Margaret Mills, 147, 148, 180, 186, 228
- Bradley  
 Anna Amelia, 87, 137, 138, 147, 164, 184, 228, 234  
 Atwell, 164, 184, 228  
 Charlotte (Lottie), 147, 164, 184, 228  
 Family, 44, 100, 123, 137, 184, 220  
 Isaac M., 53, 74, 79, 87, 91, 95–97, 105, 107, 111, 119, 137, 138, 147, 164, 170, 183, 184, 228  
 Isaac Newton, 137, 147, 164, 184, 228  
 Joanna Brown, 53, 79, 87, 137, 147, 164, 184, 228  
 Mary Frances, 137, 147, 164, 184, 228  
 Nora, 164, 184, 228  
 Viola, 137, 147, 164, 184, 228
- Braisted  
 Family, 224  
 Mrs., 217, 224
- Brant, Joseph (Thayendanega), 2, 215
- Breen, Ella, *see Gardner*
- Briggs  
 Family, 5, 11, 38, 94  
 Benjamin and Sarah Jeffries, 11, 74, 84  
 Catharine Thrush, 74, 84  
 Clinton and Marium Clark, 84, 229  
 Irwin, 5, 11, 74, 84, 127, 229  
 Irwin and Myrtie family, 215  
 James T., 11, 74, 84  
 Mary, *see Austin*  
 Myrtie Crabtree, iv, v, 5, 11, 74, 91, 229, 273
- Brown  
 Ida Belle Austin, 67, 134, 135, 150, 162, 167, 234  
 James Brown, 135, 234  
 Joanna Brown, *see Bradley*  
 Mary (Mercy) Harding, *see Clark*  
 Silas, 53
- Bunce  
 Elizabeth, 40, 53
- Family, 40, 44, 53  
 George, 40, 53, 70, 82, 92, 110, 112, 114, 132, 226  
 Hezekiah, 40, 42, 53, 60, 70  
 Hezekiah Jr., 40, 53  
 Julia, 40, 53, 66, 70  
 Julia (daughter), 40, 53  
 Lucy, 40, 53  
 Mary Ellen, *see Carmichael*  
 Thomas, 40, 53  
 William, 40, 53, 70, 82, 227
- Bunk House, 42
- Bush, Daniel, 7
- C
- Calkins, Family, 10  
 Burton, 10  
 Charles F., 147  
 Elias, 10, 61  
 Moses, 18  
 Oliver and Hannah Thomas, 10  
 James E., 147  
 Maria E. Gardner, 10, 35, 38, 51, 69, 111, 135, 147, 151, 154  
 Marie E., 147  
 Moses, 18  
 Oliver, 10, 14, 17  
 Oliver Jr., 10, 61, 147, 170
- Carmichael  
 Alexander, 10, 14, 18, 19, 24, 29, 32, 53, 55, 62, 72, 86  
 Charles, 38, 54, 135, 224  
 Cora Hardcastle Eldred, 253  
 Decator, 54, 224, 253  
 Deacon, 12  
 Floyd Decator, 253  
 Elimina, *see Drake*  
 Eliza, *see Puff*  
 Elizabeth, 62, 65  
 Emeline, *see Lewis*  
 Harriet, *see Young*  
 Ichabod, 12  
 John Mulford, 38, 54, 135, 226  
 John and Abigail, 18  
 Lewis, 30, 38, 54, 64, 65, 84, 135, 139, 147, 173, 224  
 Lina, *see Watson*  
 Maria, 54  
 Martha, *see Stage*  
 Mary Schofield, 226
- Mary Ellen Bunce, 40, 56, 60, 64, 65, 84, 139, 147, 173, 224
- Phebe, 12
- Polly Maria, *see Mitchell*
- Sarah, *see Davis*
- Sarah Eldred, 12, 13, 15, 18, 20, 24, 30, 38, 47, 54, 56, 57, 64, 75, 135, 139, 147, 150, 224, 234, 236, 241, 242, 253
- Stephen, 19
- Zophar, 18, 20, 30, 38, 47, 54, 56, 57, 64, 76, 135, 139, 147, 150, 224, 234, 236
- Carpenter  
 Dorcas, 74  
 James, 14  
 James and Lucy, 19  
 James and Mary, 74  
 John, 14  
 Joseph, 14, 74
- Case  
 Betsy Johnson, 58  
 Daniel, 19, 20
- Census Sidebars  
 Some Relatives in 1798, 5  
 Relatives in 1815, 11  
 1820 Census, Other Towns, 18  
 Where They Lived in 1830, 29  
 Family not in Lumberland 1835, 38  
 People of Lumberland 1836, 47  
 Others 1855, 74  
 Others 1860, 84  
 Others in 1870, 147  
 Others in 1875, 186  
 Others in 1880, 226
- Cholera, 32
- Church News, 12, 19, 37, 66, 85, 127, 155, 171, 187, 210
- Churches  
 Baptist 61, 85, 146, 187  
 Congregational Church, 9, 11, 12, 15, 16, 19, 24, 29–31, 36–38, 50, 53, 57, 62, 64, 66, 72, 75, 82, 85, 86, 92, 118, 146, 155, 158, 170, 171, 187, 198, 199, 210, 211, 226–228  
 Glen Spey (South Lebanon), 155

- Methodist Episcopal, 19, 24, 30, 36, 37, 66, 84–86, 127, 136, 146, 155, 185, 187, 190, 211, 220, 227–229  
 Mongaup, 155  
 Pond Eddy, 127, 155  
 Union, 118, 187
- Civil War Veterans, Highland, 132
- Clark  
 Carrie Etta Bogert, 147, 226  
 Carolyn Hallock, 37  
 Charles, 68  
 Clarrissa, *see Sergeant*  
 Clarissa, 68  
 Edward, 149  
 Elbert, 135, 148, 184, 227  
 Ella, 83, 187  
 Ellsworth, 92, 135, 143, 148, 176, 184, 227  
 Estella, 148  
 Eva, 143  
 George, 10, 18, 29, 53, 62, 68, 80, 83, 96, 170, 184, 188, 192, 203, 227  
 George (s/o George and Harriet), 227  
 George Case, 19, 29, 37, 47, 53, 68, 138, 147, 203, 226  
 Harriet Covert, 18, 29, 53, 62, 68, 80, 83, 184, 203, 227  
 John, 227  
 John Henry, 68, 138, 226,  
 Laura Austin, 29, 38, 50, 53, 54, 56, 67, 68, 70, 75, 77, 80, 81, 83, 92, 107, 112, 127, 135, 138, 139, 143, 148, 149, 164, 184, 191, 192, 203, 217, 227, 234, 248, 249  
 Louisa, 148  
 Mahlon Irvin, 10, 29, 38, 53, 68, 81, 83, 92, 135, 143, 148, 170, 183, 184, 203, 226, 234, 248  
 Martha, 10, 68, 83, 113, 148  
 Martin Dominick, 83  
 Mary (d/o Wilmot), 68, 74  
 Mary (Mercy) Harding Brown, 53, 68, 138, 147, 226  
 Mary Jane (d/o George and Harriet), 83
- Mary Van Auken, 9, 18, 29, 53, 62, 68, 73, 83, 148, 184, 202, 203  
 Moses, 19  
 Phebe Hazen, *see Myers*  
 Robert, 184, 227  
 Samuel, 83  
 Stella, *see Leavenworth*  
 Thomas W., 19, 29, 36, 47  
 Wilmot, 9, 14, 18, 19, 29, 53, 62, 68, 74, 83, 148, 170, 183, 184, 202, 203
- Clinton  
 Antoinette (Net) Austin, 57, 67, 112–114, 122, 127, 134, 135, 148, 149, 162, 171, 177, 179, 234  
 Henry, 135, 162, 181, 188, 234  
 Ida Belle, 162
- Collins, 84, 135, 144, 146, 179, 194, 200, 201, 220  
 Annie, 168, 214  
 Emma, 84  
 Emma Kelso, 44, 84, 185, 187, 194, 200, 203, 206, 214, 224  
 Isabella, 84, 146  
 James, 84, 85, 127, 146, 211, 222  
 Maria, 84  
 Mary Jane, 84  
 Robert, 84, 127, 146, 224  
 Thomas, 84, 127, 146, 176, 189, 200, 214, 222  
 William, 84
- Conkling, John, 44, 45, 114
- Connecticut, vii, 3–5, 10, 11, 27, 39, 40, 45, 51, 52, 57, 106  
 Greenwich, 53  
 Litchfield County, 15  
 Middlebury, 5, 29, 41  
 New Haven County, 29  
 Simsbury, 240  
 Stamford, 53  
 Suffield, 51, 52, 240  
 Southbury, 18, 41  
 Waterbury, 5  
 Watertown, 41  
 Woodbury, 41
- Cooper, Solon 9, 29
- Corey,  
 Betsy, 19  
 Elnathan, 17, 19, 29
- Cornwell Family, 74
- Covert  
 William and Anna Ryder, 11, 29, 62, 184  
 Harriet, *see Clark*  
 James, 11  
 Irene Tompkins, 11  
 Margaret, 187
- Crabb/Crabtree  
 Amanda Myrtie, *see Briggs*  
 Arnold and Rachel, 74, 84  
 Elijah and Priscilla, 84  
 Family, 5, 38, 91, 94  
 Ida Emily Higginson, 228  
 John, 74, 84, 228  
 Richard and Mary Giggey, 11, 84
- Craine, L.L., 196
- Crandall, George, 55
- Crane,  
 Abigail, 12  
 Alfred, 100  
 Asa, 11,  
 Calvin, 22
- Crawford, 61  
 Alfred, 100  
 Joel, 226
- Cuddeback  
 Ann Eliza Gardner, 51, 69, 135, 172  
 Louis, 172  
 Abraham, 8  
 William A., 8
- D
- Darling  
 Charles S., 228  
 Charlotte (Lottie) Myers, 78, 79, 84, 88, 146, 164, 185, 187, 228  
 Ida, 228  
 Mary, 163, 168
- Davis  
 Sarah Carmichael, 54, 135, 224
- Decker, Mr., 144
- Delaware River, 1–11, 14, 16, 17, 21–26, 28–30, 32, 33, 34, 37, 42, 43, 47, 52, 58, 63, 74, 77, 82, 128, 144, 154, 160
- Delaware and Hudson Canal, 25, 26, 31, 33, 35, 44, 61, 63, 160, 186

- DeVenoge, 83  
 Catharine, 86  
 Leon, Dr., 83, 86, 145, 158,  
 170, 172, 208  
 Mary, 86
- Dodge, 38, 39, 56, 57,  
 Benjamin, 8, 35, 44, 45, 114  
 Catharine, 66  
 Stephen A., 97
- Donation, 75
- Drake, Elimina Carmichael, 38, 54,  
 57, 135, 224
- Dubois  
 Alvina and Eugene, 186  
 George, 90  
 Mr. and/or Mrs., 194, 212, 220
- Duer, John, 4, 8, 56
- Dunlap  
 Caty Devenport, 75  
 Emily, 177  
 Johnston, 116, 132  
 Lewis, 177, 200  
 Oliver, 75, 121
- Dunn  
 James B., 17  
 Thomas, 9, 16  
 William, 17
- E**
- Echo Hill Farm House, 42, 44, 45,  
 82, 229
- Eel Weir, 22
- Eldred Cemetery, 15, 78, 80, 90,  
 106, 107, 121, 128, 130, 140,  
 150, 151, 159, 165, 173, 193,  
 198, 203
- Eldred  
 Abraham Mulford, 12, 13, 15,  
 20, 24, 26, 28, 30, 46, 53, 55-  
 57, 62, 74, 79, 113, 121, 135,  
 234  
 Almira Barnes, 79  
 Amelia, *see Wheeler*  
 Amelia, *see Hancy*  
 Almira Barnes, 79  
 Augusta Maria, 53, 62, 135  
 Benjamin Franklin, 53, 62, 79,  
 135  
 Charles C. P., 12, 13, 15, 17,  
 18, 19, 20, 24, 28, 30, 35, 36,  
 38, 46, 47, 49, 51, 53, 55, 57,  
 64-66, 69, 73, 74-76, 88,  
 111, 128, 135, 140, 146-148,  
 159, 170, 172, 174, 183, 185,  
 187, 196, 200, 210, 212, 213,  
 226, 227, 234  
 Cora Hardcastle, *see*  
*Carmichael*  
 Effa Caroline Van Tuyl, 18, 35,  
 37, 46, 47, 51, 53, 57, 64, 69,  
 88, 98, 111, 128, 135, 140,  
 148, 172, 174, 185, 196, 213,  
 226, 234  
 Eliza, *see Gardner*  
 Elisha, 5, 9, 15, 76, 252-255  
 Elizabeth Wheeler, *see Travis*  
 Frances J. Payne, 174, 185,  
 196, 226  
 George, 159  
 George Washington, 47, 53, 64,  
 66, 69, 74, 82, 83, 85, 88, 91,  
 98, 111, 119, 125, 126, 132,  
 135, 143, 148, 150, 159, 161,  
 165, 185, 197, 226, 253  
 Hannah Hickok, 11, 15, 16, 19,  
 23, 24, 25, 30, 33, 38, 46, 51,  
 54, 61, 70, 73, 75, 76, 81, 84,  
 114, 125, 134, 142, 203, 224,  
 234, 241, 253  
 Harriet, 62, 135  
 Harriet B., 15, 18, 234  
 Herbert Lincoln, 143, 159, 226  
 James (b. 1777), ix, 2, 5, 8,  
 10-16, 17, 18-20, 22, 24, 25,  
 30-32, 35, 36, 38, 49, 51, 54,  
 55, 58, 61, 62, 64, 69, 75, 76,  
 142, 172, 224, 234, 241, 253  
 James, 143, 159, 185, 226  
 James Daniel, 64, 69, 135, 174,  
 183, 185, 196, 197, 201, 202,  
 207, 208, 214, 226  
 Jane E., 53, 57  
 Josephine, 53, 60, 62  
 Justina Laing, 143, 150  
 Lamont, 53  
 Maria Adeline, *see Kendall*  
 Marietta West, 84, 85, 125, 143,  
 148, 150, 159, 161, 169, 197  
 Mary Ann, *see Austin*  
 Mary (Polly) Mulford, 2, 5, 12,  
 13, 15, 16, 18-20, 23, 224,  
 234, 253  
 Mary Eliza, 62, 135  
 Mary Hulse, *see Forgeson*
- Phebe Maria, *see Austin*  
 Polly Vanorsdol, *see Mapes*  
 Rebecca, 53, 64, 69, 135, 148,  
 165, 166, 185, 189, 226  
 Sarah, *see Carmichael*  
 Sarah, *see Bowhanan*  
 Sarah Jane, *see Wait*
- Elting, Rev. Cornelius, 34
- England, 5, 15, 28, 40, 41, 53, 65,  
 68, 72, 91, 186  
 Bishopstoke, 51  
 Hampshire, 51  
 Sleaford, 78  
 South Hampton, 51  
 Tichfield, 51  
 Yorkshire, 79
- Enlistments in Civil War, 92
- Ennes, Henry and Elizabeth, 147
- Evenhoe, Charles, 196
- Erie Railroad, 43, 61, 77, 81, 154
- Ewart  
 Albert, 79  
 Edith May Palmer, 79, 90, 105,  
 128, 148, 184, 228  
 Pamela Tipling, 79  
 William, 79
- F**
- Faith*, 258  
*Field Flowers*, 153  
 Fish, Mr., 59  
 Fisher, Rev. and Mrs. E. W., 226  
 Fisk, James, 142, 154  
 Fletcher, Benjamin, 184  
*Flowers*, 152  
 Follett, Mr., 220  
 French and Indian War, 5  
 Forgeson, Gardner, 27, 29, 33, 61,  
 173  
 Forgeson  
 John, 15, 253  
 Mary Hulse Eldred, 5, 12, 13,  
 15, 46, 253  
 Fourth Orange City Regiment, 2  
 Frey, Gracie, 186  
 Furman, Mr., 23
- G**
- Gardner  
 Albert L., 69  
 Ann Eliza, *see Cuddeback*  
 Anna (d/o James E.), 226



- Anna (d/o Sears R.), 69  
 Bee, 212  
 Caroline, 47, 51  
 Charles, 30, 33, 35, 38, 47  
 Charles, F., 148, 226  
 Chauncey, 30, 33  
 Edna, 88  
 Eliza Ann, *see Young*  
 Eliza Eldred, 12, 13, 15, 16, 19, 20, 24, 27, 30, 33, 35, 38, 39, 44, 47, 51, 57, 69, 75, 76, 82, 135, 111, 172, 182, 185, 192, 193, 226, 234  
 Elizabeth, 69, 172  
 Ella Breen, 88  
 Felix K., 69  
 Frank, 148, 185, 201  
 Harry, 148  
 Herbert D., 193, 226  
 Horace, 51  
 James E., 47, 51, 69, 82, 135, 148, 170, 185, 226  
 James K. (son of Stephen St. John), 88, 193, 226  
 James Keen (b. 1805), 17, 19, 24, 25, 27, 30, 35, 38, 39, 44, 45–47, 51, 56, 57, 61, 65, 69, 76, 82, 111, 114, 135, 172, 234  
 Joseph Lake, 18, 111, 234  
 Katie, 119, 193, 226  
 Letty, *see Sergeant*  
 Linda, 148, 185  
 Louisa McElroy, 82, 88, 119, 192, 193  
 Margaret Terns, 226  
 Maria E., *see Calkins*  
 Mary, *see Austin*  
 Mary Ann Creiger, 35, 37, 47, 69, 234  
 Mary E., 69  
 Mary Keen, 9, 17, 18, 25, 28, 29, 35, 36, 51, 53, 57, 69, 111, 234  
 Mary L., 193, 226  
 Moses, 234  
 Myers J., 193, 226  
 Rebecca Jane Rider, 47, 51, 82, 148, 185, 226  
 Sarah Elizabeth, 47, 51, 69, 76  
 Sarah Purvis, 18, 234  
 Sears, 9, 17, 18, 22, 25, 28, 29, 31, 32, 34, 35, 36, 49, 51, 53, 55, 57, 61, 62, 76, 111, 234  
 Sears E., 69  
 Sears Robert, 17, 35, 47, 66, 68, 69, 111, 234  
 Stephen St. John, 27, 38, 51, 61, 69, 76, 82, 88, 111, 119, 135, 148, 193, 214, 226  
 Susan, 148, 185, 226  
 William H., 47  
 Geier, Joan, 47, 49, 79  
 Gillespie  
 Agnes, 210  
 Margaret Ann, 210  
 Grace, Mr., 30  
 Grassy Swamp, 12  
 Gray, Elizabeth, 12  
 Gregory  
 Clara, 236, 237  
 Polly Maria Carmichael, *see Mitchell*  
 Griffin, “Uncle Steve”, 28  
 Grinnell, Charles Jr., 192  
 Gunn,  
 Charlotte, 41  
 Esther, 41  
 Ransom, 41  
 H  
 Hagan Pond, *see Highland Lake*  
 Halfway Brook, ix, 1, 2, 4–6, 8, 9, 11, 12, 13, 14, 16, 17, 20, 26, 27, 28, 30, 32, 33, 34, 35, 44, 47, 49, 55, 57, 62, 64, 65, 146, 184, 227, 229  
 Hallock  
 Anna May Buchanan, 226  
 Daniel Van Tuyl, 47, 51, 147  
 Douglas, 37  
 Emily Knecht, 37, 78  
 Emma Amelia Schwab, 147, 226  
 Hosea Ballow, 147  
 Julia Van Tuyl, 37, 51, 70, 147  
 Mary Alice Rider, 47, 51, 173  
 Oliver Blizzard, 37, 51, 70, 147, 226  
 Samuel Jesse, 147, 226  
 Thomas W., 37, 51, 70, 147  
 William, 147  
 Hammond, William H., 148  
 Hancy  
 Amelia Eldred, 47, 53, 62, 79, 113, 121  
 John, 79, 113, 121, 135  
 Hankins, 9, 61  
 James, 68  
 Maria, *see Myers*  
 Hardenburgh Patent, 7, 45  
 Harris, George, 185, 226  
 Hartwell, 35, 44  
 Hawks Nest, 12, 82, 128  
 Hazen, Phebe, *see Myers*  
 Hemlock trees, 6, 10, 144  
 Hickok  
 Almeda Drake, 70, 82, 184, 227  
 Ann Eliza, *see Bolton*  
 Asa, 11, 15, 16, 17, 19, 23, 29, 46, 54, 135, 234  
 Benjamin Merwin, 54, 59, 70, 82, 117, 121, 132, 203  
 Charles, 54, 59, 70, 82, 117, 132, 184  
 Charles (s/o William and Almeda), 227  
 David H. (s/o Asa), 11, 15, 16, 19, 29, 234  
 David Hinman (s/o Uncle Justus), 54, 59, 70, 85, 135, 170, 184, 227  
 Elizabeth (Betsy) Rice, 11, 15, 16, 234  
 Elta, 227  
 Emma F., 70  
 Esther Hinman, 11, 15, 16, 17, 19, 23, 29, 54, 234  
 Frances E., 227  
 Galen, 54  
 George W., 70  
 Hannah, *see Eldred*  
 John and Viola, 186  
 Justice (s/o David and Mary), 70, 227  
 Justus, Uncle, 11, 16, 18, 29, 32, 36, 54, 59, 68, 70, 121, 170, 184, 193, 203, 214, 234  
 Louisa, 11, 15, 16, 19, 234  
 Mary, *see Stidd*  
 Mary (Aunt Polly) Wells, 16, 18, 19, 29, 54, 59, 70, 121, 184, 193, 203, 234  
 Mary Jane Russell, 70, 135, 184, 227

- Morris, 227  
 Olin, 70, 135, 184, 187, 227  
 Reeves W., 59  
 Reuben, 11, 14, 15, 16, 19, 234  
 Robert Land, 54, 59, 70  
 Sarah Dehart, 184  
 Sylvia, 11, 15, 234  
 Wells, 199  
 William, 54, 70, 82, 121, 131, 132, 170, 184, 226
- Higginson  
 Edward, 84, 91, 94, 117, 228  
 Ida Emily, *see Crabtree*  
 Mary Donaldson, 84, 91, 228
- Highland Lake, 16, 28, 34, 49, 50, 53, 60, 64, 67, 68, 69, 72, 78, 83, 126, 145, 146, 148, 179
- Hill  
 Alfred, 83, 186  
 Alice Amelia Sergeant, 83, 186, 235  
 Bertha, 83  
 Bessie, 186  
 Esther Sergeant, 186  
 Gladys, *see Myers*  
 John Thomas, 83, 186  
 Mable, 220  
 Thomas Alvin, 83, 186, 235
- Homan, Benjamin, 7
- Homestead Act, 94
- Hooker, 21  
 Joseph, General, 105  
 Almira Austin, 4, 5, 19, 22, 29, 32, 37, 234  
 Fannie, 22  
 James T., 19, 22, 29, 37, 234 R., 14
- Howell, Rev., 34
- Hudson River, 4, 8, 25, 26, 31, 33, 54, 63, 154
- Huguenot, 5, 70
- Hulse  
 David, 45, 114  
 James, 15  
 Mary, *see Forgeson*  
 Mary Arnot, 15
- Hurd  
 Chauncey, 10, 18,  
 Curtis, 45  
 Family, 27, 29  
 Graham, 10, 18  
 Solomon, 18, 29
- Husted, Albert, 161, 162, 165
- I
- I am Tired*, 219  
*I Locked It In*, 223  
*In Memory of Edith E. Austin*, 221  
*In Memoriam*, O.G. Warren, 174
- Ingersoll  
 Abraham, 19, 45, 53, 83, 109, 114  
 Family, 109  
 Sarah (Sally), 45, 53, 83, 109, 114
- Ingraham, Laurence, 29
- Ingram  
 Andrew and Rebecca, 187  
 Charlotte, *see Leavenworth*  
 Christina Hayes, 11, 39  
 Sarah, *see Bishop*  
 Tjerck, 37  
 Unknown, 11
- J
- Jervis, John B., 26
- Johnston  
 Dora, 154  
 Jane Crawford, 16, 22  
 John, 16  
 John W., 16
- K
- Kansas  
 Abilene, 196, 197, 224  
 Brookville, 195, 229  
 Burlingame, 197, 200, 216  
 Carbondale, 197  
 Council Grove, 197, 201, 202, 218  
 Ellsworth, 195  
 Kansas City, 197, 201, 207, 208  
 Lawrence, 197, 220, 222  
 Rosedale, 197, 207, 208, 209  
 Solomon City, 185, 195, 197, 201, 203, 205, 207, 210, 213, 214, 217, 218, 229
- Kelly  
 Alma Louella Sergeant, 184, 235  
 Frank, 235
- Kelso  
 Alice, 185
- Amanda, 44, 185, 188, 200, 202, 212  
 Edward, 84, 127, 185, 199, 220  
 Eden Evert, 187  
 Ella, 185  
 Emma, *see Collins*  
 Family, 194  
 Minnie, 185  
 Mr. 170, 177, 200, 201–203, 208, 209, 211, 220  
 Robert Sr., 44, 84, 170, 183, 185, 188  
 Robert Jr., 84, 185, 197, 201, 215, 216
- Kendall  
 Charles, 172, 185  
 Maria Adeline Eldred, 64, 69, 135, 172, 185  
 Nelly Effa, 185
- Kilferty, Daniel, 85
- Kilgour, John F., 154
- Knapp  
 Clara, 5  
 Naomi Palmer, 5, 11, 53  
 Samuel, 5, 53
- Knight, Joshua, 11
- Kyte  
 Eliza Creiger, 33, 35, 60, 66, 72, 164, 184, 199  
 Elizabeth (Libby) Terry, 90, 155, 184, 185  
 Felix Jr., 33, 58, 85  
 Felix, Rev., 16, 31, 32, 33, 34, 35, 36, 37, 44, 45, 53, 61, 66, 72, 74, 75, 76, 79, 84, 92, 125, 158, 164, 170, 179, 183, 184, 198, 199, 200, 201, 202
- Francis, 35  
 Joseph, 34, 35, 199  
 Julia, 157, 158  
 Thomas, 33  
 William, 85, 135, 138, 158, 184
- L
- LaBarr, 29, 47  
 Calvin, 74, 84, 128, 226  
 Elizabeth Rice, 226  
 Gordon Ransom, 18, 29, 47, 74, 128  
 Jacob, 18, 74  
 Increase, 74  
 Mary, 18

- Sarah Ammerman, 18, 74  
 Susannah Fetter, 74, 128  
 William, 74
- Lackawaxen River, 26
- Laing  
 Justina (Tina) Austin, 60, 65, 67, 90, 122, 125, 126, 129, 130, 133, 134, 135–138, 141–143, 149–152, 154, 156, 158, 162, 164, 169, 170, 172, 177, 181, 182, 184, 188, 192, 217, 234  
 Randolph (Ranny), 135, 141, 143, 149, 150, 152, 153, 155, 162, 164, 168, 169, 177, 179, 181, 182, 234
- Land, Robert, 28, 29
- Lake DeVenoge, 83, 84, 86, 145
- Lazerlier  
 Abraham Jr., 5  
 Abraham Sr., 5, 11, 70,  
 Elizabeth, *see Van Pelt*  
 Family, 67,  
 Jane Ann, 5  
 Magdalin, 5  
 Mary, 5,  
 Mary Webber, *see Taylor*
- Leavenworth Family, 41  
 Amelia Ann, 39, 42, 53, 128, 234  
 Anna Mae, 185, 197, 220  
 Atwell Bishop, 42, 45, 46, 53, 68, 82, 87, 90–92, 97, 99, 101, 102, 104–106, 110–112, 114, 117–121, 123–125, 128, 130, 132, 164, 234  
 Bible, 46, 256  
 Charlotte Gunn, 41  
 Charlotte Ingram, 9, 11, 19, 30, 38, 39, 40, 42, 53, 68, 79, 82, 87, 90, 97, 120, 123–125, 127, 128, 132, 137, 140, 148, 155, 184, 197, 220, 227, 228, 234, 256  
 Ebenezer, 18, 41  
 Elias, 27, 41  
 Ella Phoebe Sergeant, 10, 11, 37, 80, 83, 87, 203, 227  
 Gideon, 18, 29, 41  
 Gisele Rouillon, 112, 150, 228  
 Harriet, *see Palmer*
- Hezekiah Bunce, 42, 45, 46, 68, 82, 87, 92, 97, 113–115, 127–130, 132, 139, 234  
 James Garfield, iv, 10, 18, 37, 39, 80, 182, 203, 227, 228  
 James (Jim) Roberts, 45, 112, 228  
 Jennie, *see Austin*  
 John, 41  
 John Ellis, 42, 46, 53, 68, 82, 87, 97, 99, 114, 125, 137, 138, 184, 195, 228, 234  
 Julia Ann (Anna), 42, 46, 68, 82, 87, 94, 95, 101, 105, 117, 125, 129, 140, 234  
 Lemira, 41  
 Maria Louisa Myers, 44, 45, 65, 67, 68, 71, 72, 78, 79, 84, 87, 95, 135, 146, 164, 179, 181, 184–186, 197, 220, 228, 234  
 Sarah Jane, 39, 42, 53, 128, 234  
 Sherman, 5, 18, 41  
 Sherman Buckley, 9, 10, 11, 19, 27, 29, 30, 38, 39, 40–46, 53, 66, 68, 79, 82, 85, 87, 90, 95, 97, 112, 114, 127, 128–132, 137, 138, 140, 148, 155, 170, 183–186, 188, 228, 234, 356  
 Sherman Clinton, 19, 27, 37  
 Sherman Stiles, 42, 44–46, 53, 65, 68, 82, 86–107, 109–119, 121–126, 128, 131, 132, 140, 148, 179, 181, 182, 183, 184, 185, 187, 188, 197, 220, 227, 229, 234  
 Stella Clark, 19, 37, 51, 68, 69, 138, 147  
 Thomas, 41  
 Truman Ellis, 197, 220, 227  
 Truman Stiles, 27, 29  
 William, 18, 41
- Lefarge, Samuel, 85  
 Leibla, William, 92, 132  
 Lenape, 2, 3, 7, 9  
*Lessons of Life*, 216  
 Leven River, 41
- Lewis  
 Emeline Carmichael, 54, 135, 224  
 Joe, 214
- Lilly  
 Family, 62  
 Henry, 33, 35, 36, 84, 121, 208, 210, 220  
 Jeremiah, 11  
 Jonathan, 74, 84  
 Lana, 84  
 Lydia, 84  
 Margaret, 62  
 Melissa, 62  
 Mr. and wife, 186  
*Little Eva*, 143  
 Littlefield, Annis Austin, 51  
 Livingston  
 Unita Jane Sergeant, 83, 227  
 William, 227
- Lord, Samuel, 23  
 Lord and Taylor, 23, 73, 166  
 Lounberry, John and Sarah, 147  
 Loyalists/Torries, 2, 4, 5, 11, 54, 215  
 Lumbermen, 40
- M  
 MacKenzie, Margaret, 187  
 Maglione, Margie Austin, 47, 79  
 Maney, Samuel, 36  
 Manney, Jacob, 14  
 Manning, Dick, 23  
 Many, Robert, 29
- Mapes  
 Charles Egbert, 119, 128  
 George Egbert, 90, 111, 119, 128, 211  
 Polly Vanorsdol Eldred, 47, 53, 64, 69, 111, 119, 128, 135, 211  
 Theodore, 90  
 William and Mary, 66
- Maps  
 Austin/Eldred Lands, 55  
 Austin Property, 50  
 Eldred Land, 20  
 Eldred Gardner Sawmill, 28  
 Halfway Brook Village, 16, 36  
 Kansas, 197  
 Kyte Family Home, 36  
 Leavenworth Property, 44  
 Myers Property, 68  
 Northeast United States, v, vi  
 Round Pond/DeVenoge, 83



- Town of Highland, 1879 Beers, 145  
 Town of Lumberland, viii  
 Towns on the Upper Delaware River, 3  
 Marsh, J. T., 226  
 Mason, Mercy, 12  
 Mast Hope Turnpike, 8, 77  
 Maudsley, Louis, 47, 74  
 McBride, Cornelius, 84  
 McKenzie  
   George Ross, 149  
   Mr., 172  
 Metcalf, Charles W., 208, 210  
 Metzger  
   Barbara, 226  
   Christian, 226  
   Follett, 226  
   Robert, 226  
 Middaugh, 9, 21  
   Asa, 37  
   Dennis, 92, 132  
   Levi, 9, 22, 23, 29, 30  
   William, 11  
 Mier  
   Martin and Gerreberg  
     Johannise Ackerman, 5  
 Mill Pond, *see Stege Pond*  
 Mills  
   Alexander, 72, 146, 179  
   Archibald  
     George, 72  
     Geraldine, *see Russell*  
   Ivy, 19  
   Margaret, *see Boyd*  
   Margaret Clark, 72  
   Margaret Gillies, 72, 146, 179  
   Martha, *see Myers*  
 Millspaugh  
   Mary Letitia, *see Austin*  
   Mr. or Mrs., 150, 207  
 Minie Ball, 98  
 Minisink, *see New York*  
   Battle, ix, 2, 214, 215  
   Patent, 2, 7, 9, 20, 28, 45, 56  
 Missouri, 82  
   Rolla, 118, 121, 203  
   St. Louis, 117  
 Mitchell  
   Polly Maria Carmichael  
     Gregory, 38, 47, 65, 135, 224, 236, 237  
     Robert, 236  
   Mongaup River, 1–3, 26  
   Moosic Mountains, 25, 26  
   More, Matthew, 65  
   Morris, Nicholas family, 22  
   Mott, Mary, 165  
   *Mrs. Prindle's Soliloquy*, 204  
   Mt. Hope-Lumberland Turnpike, 8  
   Mulford, Abraham, 5  
   Murray, Mary A., *see Schoonover*  
   *My Flowers*, 151  
   Myer, David and Elizabeth, 5, 11, 18, 29, 65  
 Myers  
   Abel Sprague, 29, 37, 47, 51, 53, 72, 79, 84, 104, 147, 159, 186, 196, 203, 211, 214, 226  
   Archibald Abel (s/o Abel), 79, 159  
   Augustus (Gus) Waterman, 72, 78, 84, 88, 146, 164, 185, 228  
   Benjamin, 47, 65, 67, 68  
   Charles C. (b. 1875), 185, 228, Charles, 90, 107  
   Charles Henry (Chuck), 36, 37, 47, 72, 79, 159  
   Charlotte (Lottie), *see Darling*  
   Christena Stevens, 186  
   David William, 65  
   Edwin Van Schoick, 78, 104, 147, 159, 173, 186, 226  
   Eliza Jane, 72  
   Emeline, 72  
   Emma, *see Sergeant*  
   George Washington Taylor, 65, 67, 68, 72, 73, 78, 79, 84, 88, 146, 148, 164, 179, 183, 185, 228  
   Gladys Elizabeth, *see Austin*  
   Hannah Maria Van Schoick, 53, 72, 78, 79, 84, 104, 147, 159  
   Gladys Hill, 83  
   Jackson, 226  
   James L., 84, 147, 159, 186  
   Jane Ann Van Pelt Webb, 5, 11, 18, 29, 38, 46, 47, 65, 66, 67, 68, 70, 72, 73, 78–80, 84, 86–88, 135, 146, 148, 164, 179, 185, 186, 220, 226, 228  
   Letitia Parker, 83, 84, 90, 107  
   L.L., 198  
   Mabel Louise Owen, 78, 173  
 Maria Hankins, 72, 159, 186, 226  
 Maria L., *see Leavenworth*  
 Martha Mills, 72, 148, 179, 180, 185, 228  
 Martin David, 5, 11, 18, 29, 38, 46, 47, 65, 66, 67, 68, 72, 79, 83, 84, 87, 88, 135, 146, 148, 164, 165, 170, 237  
 Mary, 66  
 Minnie Sergeant, 79  
 Moses, 29, 36, 37, 47, 51, 66, 70, 170, 173, 203  
 Phebe Hazen Clark, 19, 29, 36, 37, 47, 51, 53, 70, 200, 203  
 Raymond, 83  
 Samuel C., 84, 90, 107, 132  
 Sarah Griffith, 38, 47, 65  
 Sarah, 72  
 Sarah, 226  
 William, 121, 127, 132  
 William G., 170  
 N  
 New Jersey, 4, 5, 9, 11, 22, 29, 30, 47, 146, 186, 226  
   Bergen County, 65  
   Minisink Island, 9  
   Trenton, 160  
 Newcome  
   Carrie, 156  
   Harriet, 85  
   Kate, 155, 156  
   Mrs., 155, 156, 177  
 Newburgh-Cochecton Turnpike, 7, 8, 10, 21  
 Newkirk, Benjamin B., 8  
 Newman  
   Caroline Austin, 19, 29, 38, 50, 61, 107, 137, 234  
   Carrie, 107, 137  
   Mr., 50, 137, 234  
 New York  
   Barryville, 1–3, 5–11, 14, 15, 16, 19, 22, 24, 25, 26, 27, 29, 30, 32–37, 57, 58, 61, 74, 78, 81, 82, 85, 88, 90, 101, 111, 117, 118, 121, 127, 136, 137, 144, 170, 173, 185, 187, 196, 198, 199, 206, 207, 214, 220, 226, 227, 229

- Beaver Brook (Mills), 3, 12, 14, 18, 28, 29, 30, 33, 35, 38, 39, 47, 57, 58, 84, 125, 128, 168, 226
- Bethel, 7, 8, 10, 18, 26, 27, 29, 30, 39, 41, 51, 68, 90, 137
- Big Pond, *see Pond Eddy*
- Carpenter's Point, *see Port Jervis*
- Callicoon, 1, 3, 7, 169
- Cochecton/Cushetunk, 1, 3, 5, 7, 8, 9, 11, 12, 26, 147
- Denton, 5, 9, 15
- Eldred, ix, 2, 14, 15, 23, 25, 27, 28, 30–33, 36, 38, 39, 44, 46, 49, 50, 52, 62, 65, 66, 78, 82–86, 88, 90, 92, 114, 119, 138, 143, 146, 148, 157, 159, 164–166, 172, 174–176, 180, 182, 184, 186, 190, 194, 195, 197, 199, 205, 216, 218, 222, 224, 226, 228, 229, 238, 239
- Glen Spey, 7, 11, 18, 29, 34, 49, 149, 155, 218
- Goshen, 2, 15, 61, 92, 96, 112, 120, 215
- Halfway Brook Village, *see Eldred*
- Highland, Town of, ix, 7, 45, 68, 76–78, 80–82, 84, 89, 100, 114, 116, 119, 131, 132, 135, 140, 144, 145, 147, 169, 170, 172, 175, 187, 188, 199, 207, 229, 238, 239
- Hurd Settlement, 10, 27, 45
- Kingston, 25, 26, 33
- Liberty, 7, 169
- Lumberland, Town of, vi, ix, 1–23, 25, 26, 27, 28, 29, 30–32, 35–38, 40, 46, 47, 48, 49, 51, 52, 56, 57, 60, 61, 64, 66, 67, 68, 70, 75, 76, 78, 82, 85, 87, 101, 128, 144, 149, 153, 155, 158, 165, 170, 172, 173, 198, 199, 224, 226
- Middletown, 8, 9, 54, 57, 90, 94, 101, 150, 151, 217, 241, 242
- Minisink, 5, 9, 15
- Minisink Ford, 2, 9, 63, 78
- Mongaup, 1, 3, 6, 7, 18, 19, 29, 49, 155
- Mongaup River, 1–3, 26
- Monticello, 9, 13, 27, 31, 32, 35, 41, 51, 56, 163, 169, 211
- Narrow Falls, 8, 10, 12, 15, 19, 24, 36
- Narrowsburg(h), 1, 3, 5, 7, 8, 58, 59, 61, 62, 77, 78, 92, 136, 144, 160
- Orange County, 2, 5, 8, 10, 11, 13, 15, 17, 37, 38, 54, 62, 64, 82, 147, 148, 224
- Ossining, 54
- Pond Eddy, 1, 2, 6, 7, 8, 9, 16, 17, 22, 26, 28, 29, 30, 47, 49, 111, 127, 144, 154, 155
- Port Jervis, 4, 5, 9, 12–4, 22, 25, 26, 28, 37, 43, 44, 61, 79, 82, 83, 127, 154, 160, 180, 184, 207, 228
- Ridgebury, 11, 12
- River settlement, The, *see Barryville*
- Rondout, 25, 32, 33, 67
- Scotchtown, 9, 11, 30, 39
- Shohola/Shehola, 1–6, 8, 19, 20, 47, 74, 79, 81, 82, 90, 117, 118, 121, 177, 191, 229
- South Lebanon, *see Glen Spey*
- Sparrowbush, 3, 10, 43, 44, 68, 92, 128
- Sullivan County, ix, 2, 8, 18, 25, 27, 37, 38, 39, 45, 56, 68, 69, 87, 107, 128, 144, 147, 163, 170, 215
- Ten Mile River settlement, *see Tusten*
- Thompson, Town of, 10, 128, 140, 148
- Tusten, Town of, 1–4, 7, 8, 9, 16, 29, 32, 33, 53, 57, 61, 68, 72, 78, 100
- Wallkill, Town of, 5, 7, 9, 12, 13, 15, 18, 30, 82
- Wawayanda, Town of, 9
- Westchester County, 4, 11, 13, 18, 19, 29, 38, 50, 51, 53, 90, 106
- Osier/Osir, 189
- Augustus (Gus), 196, 199, 202, 210, 214, 215, 218
- Carrie, 218
- Owen(s)
- Arthur, 147
- Daniel, 29
- Eliza, 37
- Elizabeth Barnes, 72, 78, 80, 173
- Elizabeth Tether, 72, 78, 80, 147, 173
- Elizabeth Thompson, 187
- Ethalinda, 72
- Frank and Mary, 147
- John Miller, 170
- Mabel Louise, *see Myers*
- Mary Elizabeth (servant) 184, 228
- Morgan, 72, 78, 80, 173
- Phebe, *See Sergeant*
- Robert, 72, 78, 80, 147, 170, 173, 183
- P**
- Palmer
- David J., 170
- Edith, *see Ewart*
- Harriet Leavenworth, 38, 39, 42, 53, 68, 79, 82, 87, 90, 105, 128, 140, 148, 184, 228, 234
- Harry C., 83, 105, 128, 148, 184, 228
- Henry, 62, 68, 79, 82, 83, 87, 90, 105, 128, 148, 184, 228, 234
- James, 184, 228
- Sherman, 83, 87
- Parker
- Benjamin and Emaline, 83
- George W., 100, 132
- George and Kate, 136, 172, 226
- James, 186
- Letitia, *see Myers*
- Mary A. Murray, *see Schoonover*
- Parmenter, 218
- Emily, *see Austin*
- Paton
- Archibald. 135, 148, 162, 191, 234

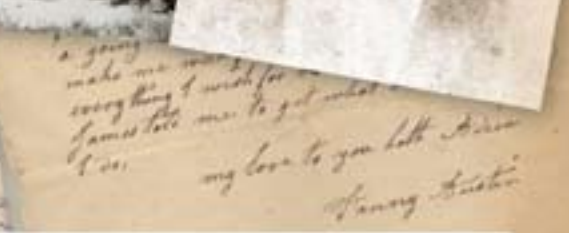
- Miranda (Rand) Austin, 57, 65, 67, 126, 134, 135, 148, 162, 181, 188, 191, 234
- Payne  
Adeline, 174  
Charles Henry, 174, 196, 199  
Frances, *see Eldred*  
William and Mary, 210
- Pennsylvania, 1, 2, 4, 22, 25, 36, 42, 52, 144, 154  
28th Regiment, 103  
147th Regiment, 103  
Big Eddy, 58  
Bradford County, 29, 68  
Cadis 46, 54  
Chester County, 48  
Damascus, 147  
Delaware Water Gap, 9, 160  
Eldred, 15  
Gettysburg, 107  
Hawley, 78  
Honesdale, 8, 9, 25, 26  
Lackawaxen, 9, 25, 63, 117, 170, 186, 9,  
Luzerne County, 52  
Manchester, 226  
Mast Hope 8, 9  
Milford, 5  
Moscow, 73  
Muhlenburg, 52  
Philadelphia, 5, 6, 154, 160  
Shickshinny, 52  
Shohola, 1–3, 5, 8, 19, 21, 47, 79, 81, 229  
Standing Stone, 42, 68, 86, 147  
Susquehanna River, 52  
Tell, 5, 11, 38  
Water Gap, 9, 160  
Wayne County, 5, 77  
West Damascus, 79
- Perkins  
Comelia Dabron, 30  
Dr., 28–30, 67
- Persbacher  
Catherine Kreiter, 79  
Elizabeth, 79  
Jacob, 79
- Poem for Ida Austin*, 167
- Poems  
*A Reverie or Kansas Romance*, 225
- An Answer*, 223  
*Faith*, 258  
*Field Flowers*, 153  
*Flowers*, 152  
*I am Tired*, 219  
*I Locked It In*, 223  
*In Memory of Edith E. Austin*, 221  
*In Memoriam*, O.G. Warren, 174  
*Lessons of Life*, 216  
*Little Eva*, 143  
*Mrs. Prindle's Soliloquy*, 204  
*My Flowers*, 151  
*Poem for Ida Austin*, 167  
*Put Me in My Little Bed*, 156  
*She is Gone*, 219  
*To Mother*, 221  
*To My Husband*, 258  
*When Shall We Meet Again*, 141, 142  
*Who Keeps Dead Flowers*, 205
- Pool, Daniel, 22
- Proctor, William F., 149
- Puff, Eliza Carmichael, 135, 224
- Put Me in My Little Bed*, 156
- Q
- Quick  
Abraham, 14  
David, 14, 22, 34  
Francis, 14, 22, 23  
Francis and Rachel, 19  
Hugh, 22  
James, 74  
M.W. Quick, 121
- R
- Reardon, John, 140
- Reeves, 14, 19
- Revolutionary War, 2–4, 9, 11, 15, 52, 54, 57
- Rider  
Augustus, 51  
Fernando, 51  
Job, 47, 51, 82, 173  
Mary Alice, *see Hallock*  
Rebecca, *see Gardner*  
Susan Adeline Van Tuyl, 47, 51
- Rixton, Joseph and Mary, 147
- Roebing  
Aqueduct, 63, 81  
John A., 63
- Roebing-Chauncey Bridge, 81, 121
- Ross, Hugh, 85
- Rouillon  
Cyrus, 228  
Gisele, 40, 112, 150, 228  
Jean Charles and Blanche Olga Malinge, 111, 112, 150, 228  
Lubin and Florentine, 111, 150
- Round Pond, *see Lake DeVenoge*
- Rundle, 202  
Abe, 214, 226
- Russell  
Geraldine Mills and Stuart, 148
- S
- Sawmill, 19th Century Up and Down, 48
- Schoonover, 14, 194  
Ann Mary Austin, 29, 38, 50, 54, 64, 70, 74, 80, 106, 112, 113, 118, 120, 121, 136, 226, 234  
Daniel Rowley, 172, 186, 226  
Emily, 148, 172, 186, 226  
Mary A. Murray Parker, 136, 148, 172, 186, 187, 226  
Oliver P., 54, 57, 64, 70, 74, 118, 120, 127, 136, 148, 172, 186, 187, 220, 226, 234  
Peter, 64, 136
- Segarra, Dawn Lee Austin, 47, 79
- Sergeant, 44, 53  
Abigail, 12  
Alice Amelia, *see Hill*  
Alma, *see Kelly*  
Alvah, 29, 36, 53, 68, 80, 83, 85, 87, 111, 159, 170, 183, 184, 186, 187, 227, 235  
Anna Penney, 16, 18, 19, 28, 29, 36, 53, 158, 159, 235  
Caroline, 68, 83, 85, 184, 228  
Charles, 228  
Claribel, 228  
Clarissa Clark, 80, 83, 87, 184, 227, 235  
David R., 16, 19  
Edgar, 83, 184



- Ella Phoebe, iv, 10, 11, 18, 37, 80, 83, 87, 203, 227  
Emma Myers, 120, 138, 147, 174, 228, 235  
Esther, *see Hill*  
Ethel B., 16, 18, 19, 28, 29, 36, 47, 53, 66, 68, 83, 85, 88, 111, 121, 159, 170, 173, 183, 184, 228, 234, 235  
Frank Roberts, 80, 87, 184, 227, 228, 235  
Isaac (son of Ethel B.), 36, 53, 68, 79, 92, 111, 121, 131, 132, 159, 184, 228, 235  
Isaac C., 16, 29  
Isaac Jr., 12  
Isaac, Rev., 11, 12, 15, 16, 79, 83, 158, 226, 235  
James Gardner, 36, 47, 53, 68, 85, 88, 90, 91, 92, 95, 97, 100, 105, 111, 130–132, 138, 147, 159, 173, 235  
James W., 147, 184, 227  
Jane (d/o Ethel), 68  
Jane (d/o Alvah), 83, 220  
Letitia (Letty) Gardner, 16, 18, 19, 28, 29, 36, 47, 53, 66, 68, 83, 88, 97, 111, 121, 159, 174, 184, 186, 228, 234, 235  
Mary (d/o Ethel), 68, 85  
Mary Richards, 12, 158, 226, 235  
Minnie, *see Myers*  
Morgan, 184  
Phebe Owen, 36, 68, 80, 83, 85, 87, 184, 227, 235  
Stephen B., 16  
Stephen, Rev., 11, 12, 15, 16, 18, 19, 24, 28, 29, 31, 36, 53, 55, 56, 83, 158, 159, 235  
Thomas (s/o Alvah), 184  
Thomas (s/o Rev. Isaac), 12  
Thomas L. (s/o Rev. Stephen), 16, 29  
Unita Jane, *see Livingston*  
*She is Gone*, 219  
Sheck, Katie, 226  
Shotwell  
Azuba, 84  
Caleb, 68, 84  
Jane, 84  
Sarah, 68, 186, 226  
Sarah, *see Webb*  
Sarah J., 226  
Stephen C., 170, 226  
Showers, John, 2  
Simmons, J.B., 120, 124  
Singer, Isaac Merrit, 149  
Skinner  
Alfred, 197, 219  
Amelia, 19  
Daniel (rafter), 5, 7  
Daniel, 36, 37, 57, 58  
Mary, 57  
Oliver, 35  
Salome, 37  
Will, 196  
Smith  
Charles M., 69  
Samuel, 20  
Snow  
Barnabus, 11  
John, 32  
Sparrow, H.L., 3  
Sprague  
Agath, 84  
B.J., 84  
Eliza, 84  
Josephine, 84  
St. John, Stephen, 35, 38, 39, 44, 56, 57, 114  
Stage  
Albert, 73, 84, 90, 214  
Charles, 84  
Chauncy, 84  
Elizabeth, 84  
George, 73, 81, 84, 90  
Jacob, 19, 21, 29, 73, 84, 85, 127, 170, 185  
Martha Carmichael, 19, 21, 73, 84, 185  
Stege's Pond, 49, 50  
Stereographs, 103  
Stewart, John J. and Sarah, 20  
Stidd  
Mary Hickok, 54, 59, 70, 184  
William, 184  
Street, Mr., 30  
Sutherland, William G., 222  
Swartwout, Peter, 14  
T  
Talmage, Dr., 190  
Taylor  
George Washington, 11, 23, 65, 73  
John and Jane, 196  
Mary Webber Lazerlier, 5, 11, 18, 29, 38, 47, 65, 70, 73  
Robert, 11, 73  
Teed  
Clara, 80, 84  
Clara Austin, 11, 19, 38, 50, 61, 80, 112, 234  
Edward Nelson, 50, 80, 112, 234  
Emma, 80, 84  
Harriet, 78  
Isaac, 38, 112  
Phebe G., 38  
Susan, *see Austin*  
Susie, 80, 113  
Ten Mile River, 1–3  
Tether  
Edward and Elizabeth, 72, 84, 147  
Elizabeth, *see Owen*  
Jane, 84  
Joseph, 84, 147, 183  
Thompson  
Adelaide (Addie) Austin, 57, 65, 67, 90, 120, 127, 134, 135, 143, 148, 149, 150, 151, 153, 154, 156, 162, 163, 165, 168, 169, 177, 180, 182, 188, 189–193, 198, 205, 209, 211, 213, 217, 224, 234  
Augustus Thompson, 182, 188  
Elizabeth Owen, 187  
Thomas Jefferson, 135, 162, 165, 188, 234  
Tommy, 188, 190, 205  
*To Mother*, 221  
*To My Husband*, 258  
Toasperm, Ida Heyen, 155  
Travis  
Elizabeth Wheeler Eldred, 46, 53, 57, 62, 74, 79, 135, 234  
Gilbert, 74, 79  
Milton, 74  
Tusten  
Dr. Benjamin, 2, 3, 215  
Tuthill  
Ezekiel, 11  
Sarah E., 85

- V
- Van Auken  
Hannah, 9, 11, 68  
Mary, *see Clark*  
Peter, 9, 11, 68
- Van Pelt  
Ann Johnson, 5, 70  
Bible, 71, 72, 257  
Catharine, 84, 85  
Elizabeth Lazerlier, 5, 11, 18,  
23, 29, 38, 47, 65, 67, 70, 72,  
73, 78, 79, 80  
Henry, 5, 70  
Jane Ann, *see Myers*  
John, 5, 11, 18, 70, 72, 73  
John Henry, 38, 47  
Maria, 38, 47  
Maria Anthony, 11, 18, 29, 38,  
70, 72  
Peter, 11, 18, 29, 38, 39, 47, 67,  
70, 72, 78  
Sarah Looker, 38, 47
- Van Schoick  
Hannah Maria, *see Myers*  
Huldah Bross, 53, 72, 78  
William, 53, 72
- Van Tuyl  
Daniel, 17, 18, 22, 29, 35, 47,  
51, 147  
Charity, 19  
Effa C., *see Eldred*,  
Julia, *see Hallock*  
Family, 21, 22  
Rebecca Writer, 17, 18, 22, 35,  
47  
Susan, *see Rider*
- Van Wyck, Col., 93–95, 105
- W
- Wait  
Charlotte, 186  
George, 11, 81, 86, 196  
Jennie, 203  
John, 186, 188  
Leo, 208  
Mary Mills, 187  
Sarah Jane Eldred, 69, 185,  
187, 213  
William, 185, 186, 213
- Wallace, John and Marian, 186
- Wandling, Philip, 70
- Watkins,  
Sally, 19  
Samuel, 11, 14
- Watson, Lina Carmichael, 139
- Webb  
Charles, 2, 9  
Charles Cripps, 38, 47, 65, 67,  
68, 73, 84, 88, 135, 185, 226  
Clara, 88, 135  
Henry Cripps, 38, 47, 65, 72  
Jane Ann Van Pelt, *see Myers*  
John Henry, 38, 47, 65, 72, 135  
Osmer, 226  
Sarah Shotwell, 68, 73, 84, 88,  
135, 226
- Webber  
Jacob Rev., 158, 170  
John 5, 73  
Mary, *see Taylor*
- Wells  
Anna, 19  
Alexander, 127  
Daniel, 19, 32, 36, 127  
Elizabeth, 74  
Jesse, 14  
John, 19, 28  
Mary (Polly), *see Hickok*  
Samuel, 11, 29, 85  
William, 14, 19, 29, 74
- West  
Henry 36  
Margette, 57  
Marietta, *see Eldred*  
Mary, 37, 84, 125  
Richard, 36  
Samuel, 84, 125  
Thomas, 7
- Westfield, George H., 223
- Wheeler  
Amelia Ann Eldred, 12, 13, 15,  
16, 18, 234  
Darius and Frances 16  
Elizabeth, *see Travis*  
Harvey, 16, 18, 19, 234  
John, 29  
Lydia, 58, 59, 61  
Thomas, 19
- Whilly, John, 85
- When Shall We Meet Again*, 141,  
142
- Whitney, 187  
Anthony and Eveline, 186
- Who Keeps Dead Flowers*, 205
- Wickham, 4, 9  
George D., 8, 16, 27, 56
- Williams  
Charles, 136  
Jenevieve, 136  
Rosa, 136  
Sarah, 136  
William and Charlotte, 186
- Wilson, 189, 196  
Agnes Gillespie, 210  
Anna, 147, 187, 189, 191  
Charles, 147, 187, 189  
Edward, 66, 74, 85, 132, 147,  
187  
Garrett, 19, 20  
Henry and Margaret, 74  
Horton, 132  
Mary, 147  
Phoebe, 74, 85, 147  
Sarah, 187  
W., 18  
William H., 147
- Wisner, Rev. J.O., 85
- Worth River, 41
- Woodward  
Benjamin, 8  
Charles S., 57
- Y
- Young  
Adaline A. Sweezy, 147, 226  
Coe Finch, 47, 74, 111, 125,  
147, 226  
David, 54, 84, 150, 224, 236  
Eliza Ann Gardner, 17, 47, 74,  
147, 234  
Harriet Carmichael, 18, 54, 66,  
84, 135, 150, 224, 236  
Isaac, 47, 74, 147, 234  
Jennie, 147, 226  
Libby, 84, 236





## The Mill on Halfway Brook

Stories of Families Who Settled Near Halfway Brook in the Town of Highland, New York, 1800 to 1880

At the end of 1815, James and Polly Eldred and their family arrived in the Town of Lumberland and settled on two acres with a log cabin and a sawmill near Halfway Brook. The Eldred property—four miles from the Delaware River—later became the southeast corner of Halfway Brook Village which is now Eldred, in the Town of Highland, New York.

*The Mill on Halfway Brook* tells of the Eldred, Austin, Myers, and Leavenworth families, their neighbors, friends, and kinsfolk that settled in what was once the Town of Lumberland, in the villages of Halfway Brook (Eldred), The River (Barryville), Ten Mile River (Tusten), and South Lebanon (Glen Spey).

The narrative weaves vignettes of townsfolk, preachers, churches, regional and national events with historical information, land documents, censuses, an 1875 biography, Congregational and Methodist Church records, over 300 photos and postcards, old and new maps, and at least 200 family letters (1845–1880).

*The Mill on Halfway Brook* is fully indexed with names of over 900 people, places, and events. It is the first in the series, *Memoirs from Eldred, New York, 1800–1950*.

### About the Author

Louise Elizabeth Smith holds a bachelor's degree in music education from Western Michigan University, and a master's degree in elementary education from Eastern Michigan University. After thirty years of experience in education, Louise now enjoys researching the history of her family. Louise and her husband Gary reside in Cave Creek, Arizona.

HALFWAY BROOK

ISBN 978-0-9826374-0-1

52795



9 780982 637401

