

Cylex offers the distinctive, elegant appearance of granite or sandstone combined with the durability and low-maintenance features of real stone to bring about a new dimension in signage.



Golf Course Signs & Markers



Let us help you make your course look its very best.

On every hole, throughout the entire day, Cylex Signs and Markers are there. They are the most noticeable part of any round. Looking for the tee markers, checking yardage or finding the snack bar all give the golfer a message about the quality of the course.

Cylex is the premiere source for quality golf course signage. With over 20 years of experience and 1000 courses worldwide, Cylex offers unparalleled expertise in the design and fabrication of golf course signage. Our product line includes convenient standard designs as well as custom projects.

The Look of Distinction



Tee Signs

Totems

Tee Markers

Yardage Markers

Directional Signs

Tee Signs are available in ten standard sizes ranging from 12" x 18" to 24" x 36". Hole number, par number and yardage number are all standard. Hole layout and logo may be added. Matching posts are available. Custom signs are available.

Totems are 12" wide and come in five standard heights ranging from 12" to 48". All totems are 2" thick. Hole number, par number and yardage number are all standard. Hole layout and logo may be added.

Tee Markers are available in ten standard shapes. Tee markers come standard with a one color logo and a spike. Additional colors may be added. Custom markers are available.

Yardage Markers are available as in-ground plates, totems and signs. Plates come in either chipped or flat edge and feature resin filled or painted yardage numbers. Sign and totem style yardage markers are available for driving ranges.

Directional Signs are available in ten standard sizes ranging from 8" x 12" to 24" x 36". Logo and additional graphics may be added. Entrance signs are available up to 4' x 8'. Matching posts are available. Custom signs are available.

General Signage



Cylex Granite and Sandstone signs offer all the benefits of real stone, without the limitations.

Available in virtually any shape or color, Cylex signs boast superior graphic resolution and enhanced durability. The advanced Cylex material is the product of extensive research and development and has been chosen by over a thousand customers worldwide.

Its ability to withstand extreme temperatures, resist cracking and chipping, as well as enhanced protection against UV rays and graffiti make it a natural choice for all kinds of signage needs.



Lee County, Florida

Coastal Florida is known for its beautiful seascapes and vibrant colors. Cylex helped design and implement a sign program that captured those qualities and stands up to the natural elements that can ruin signs made from other materials. Barbara Manzo, Deputy Director of Parks for Lee County, stated "We made the change to Cylex signs and have been extremely happy. Cylex signs have a natural beauty, high durability and are very low maintenance. We have been pleased with their quality, service and responsiveness to our needs."

Barbara Manzo, Deputy Director of Parks, Lee County, FL

Arlington neighborhoods, Arlington County, Virginia

Arlington neighborhoods are not required to use a particular signmaker, but the county encourages them to use Cylex Inc. in Tempe, Arizona. "Not many companies make this particular kind of sign," said Chris Nixon, coordinator for Arlington County's neighborhood conservation program. "They've held up the best, they have the best prices, and they have been easy to deal with. They have been wonderful at taking volunteer artwork and turning out signs that look great."

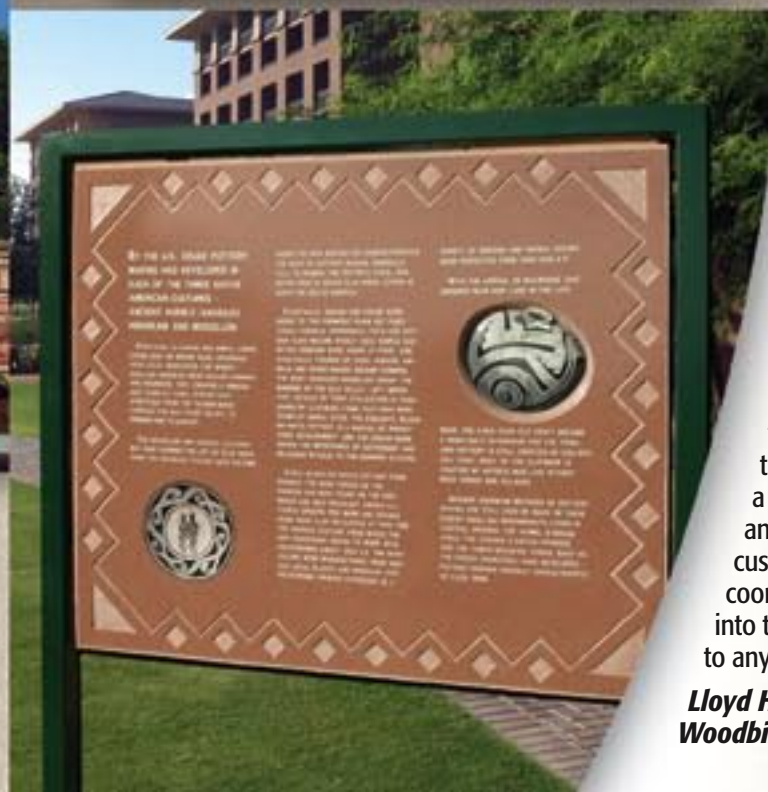
Chris Nixon, Arlington County, as quoted in The Washington Post



Westin-Kierland Resort and Spa, Scottsdale, Arizona

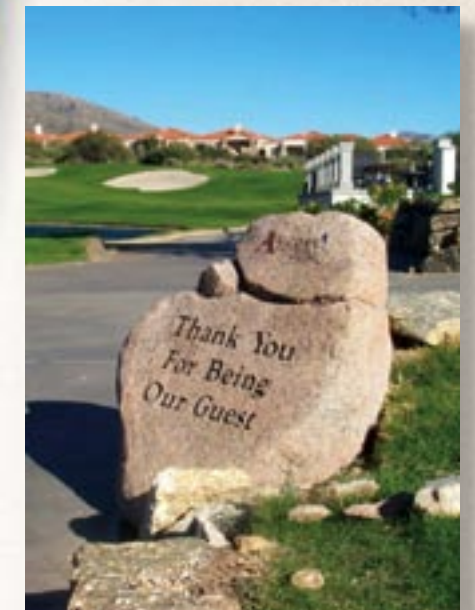
Westin Resorts are known worldwide for their unsurpassed quality and attention to detail. The elegant look of Cylex signs is an integral part of one of their newest facilities, the Westin Kierland Resort and Spa. Lloyd Hall, vice-president for Woodbine Development Corporation, owner/developer of the Westin Kierland Resort and Spa had this to say: "We continue to be very pleased with our Cylex signs. A tight schedule and changes in the signage for the opening of the Herberger Ballroom, a new addition to the Westin Kierland Resort and Spa, made this a challenging project. Cylex was always ready and everything was installed on time. Even the custom signage for our courtyards were carefully coordinated with unique art work incorporated into the signage. I would highly recommend them to anyone."

Lloyd Hall, Vice President, Woodbine Development Corporation



A New Dimension in Signage

Synthetic Rocks



Natural Beauty. That is the look of Cylex custom rocks. Suitable for many types of signage and markers, these handbuilt pieces are color matched to real samples provided by the customer to ensure they blend into any surrounding.

The faces provide an excellent surface for text or graphics, and the bottoms are flat for self-leveling.

In addition, their reduced weight allows easier and more creative installations.

Our rocks are featured at golf courses, hotels, residential communities and parks throughout the country.

We take great pride in fabricating the highest quality man-made rocks available.

Natural Beauty

What is Cylex Granite and Synthetic Sandstone?

Cylex is a composite mixture of aggregate and resins manufactured to resist fading, breaking, cracking and chipping. Cylex is sealed with an ultraviolet sealant to extend exterior durability. Cylex signage is manufactured to the highest standards, but because of the natural environmental exposure of our products, there cannot be an implied warranty, direct or indirect.

Maintenance

Minimal maintenance is required. Periodically clean to remove normal dirt and debris by washing with a mild detergent solution. Armor-All protectant or equivalent may be used to return moisture and luster after cleaning. Calcium or lime deposits may be removed using C.L.R. or a similar product. Rinse thoroughly with clear water and apply spray wax if desired.

Colors

Cylex Granite and Synthetic Sandstone are offered in unlimited colors. Sample color chips are available at no charge.

Application of Legend to Cylex Granite and Synthetic Sandstone

Legend and logos may be applied to the surface of Cylex products by sandblasting, screening, decals, or metal, foam or plastic graphics using appropriate application processes.

Weight

Cylex Granite and Synthetic Sandstone weighs approximately 15 lbs. per square foot and is 1-1/2" thick.

Sign Size Limitations

Cylex can be fabricated up to five feet wide and ten feet long with a width X length maximum of 32 square feet.

Mounting

Cylex pre-molds 5/16" metal long-shaft T-nuts into the surface for mounting when requested. Metal T-nuts can be placed into the substrate on the top edge for securing corners, or on the side or back for side-, wall-, or post-mounting per customer's request.

Thickness

Standard material thickness is 1-1/2". Fabrication of thicker material, depending on the size of the design, is available upon request.

Golf Courses

Park & Recreation

Commercial Complexes

Residential Communities

Government Facilities

Sports Facilities

Cylex, Inc.

530 W. Alameda
Tempe, AZ 85282 USA
800-356-3055 • 480-894-1706
480-894-1275 fax

Cylex East, Inc.

6120 Jet Port Industrial Blvd.
Tampa, FL 33634 USA
888-622-9539 • 813-354-3591 fax

www.cylexsigns.com

info@cylexsigns.com

